

## APPENDIX 1

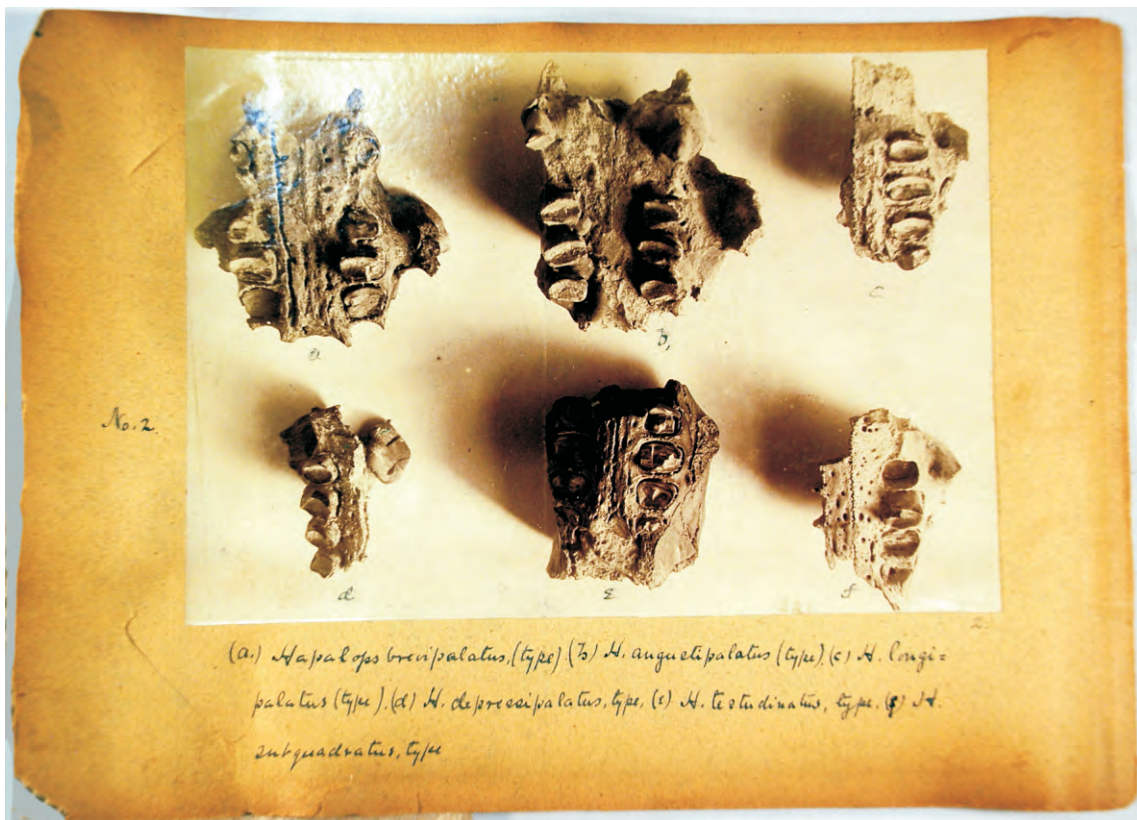
Vizcaíno et al., 2017. On an album of photographs recording fossils in the "old collections" of the Museo de La Plata and Ameghino's private collection at the beginning of the XXth century. *Publicación Electrónica de la Asociación Paleontológica Argentina*.

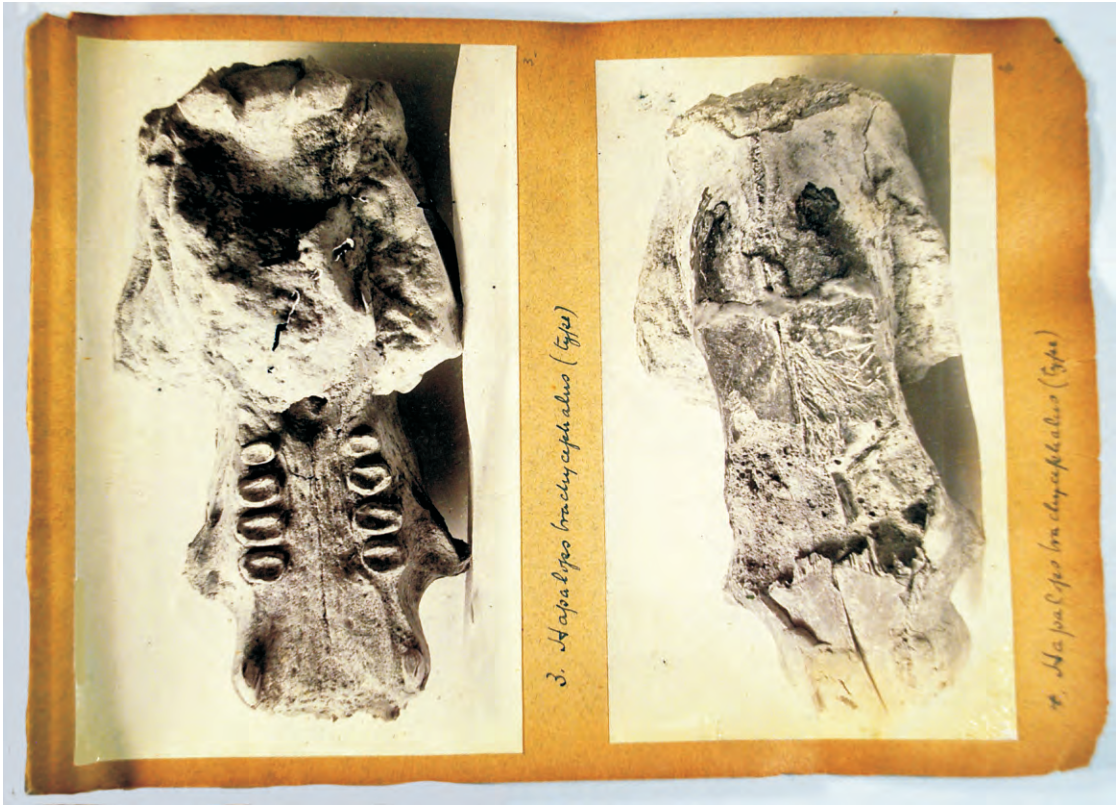
Digital reproduction of the album of photographs in the Kansas University Natural History Museum found together with the Patagonian fossils collected by Handel T. Martin in 1904. Reproduced with permission of Leonard Krishtalka and the Biodiversity Institute, Division of Vertebrate Paleontology, University of Kansas.

Digitized by Sergio F. Vizcaíno and Cecilia M. Deschamps (May 2017).

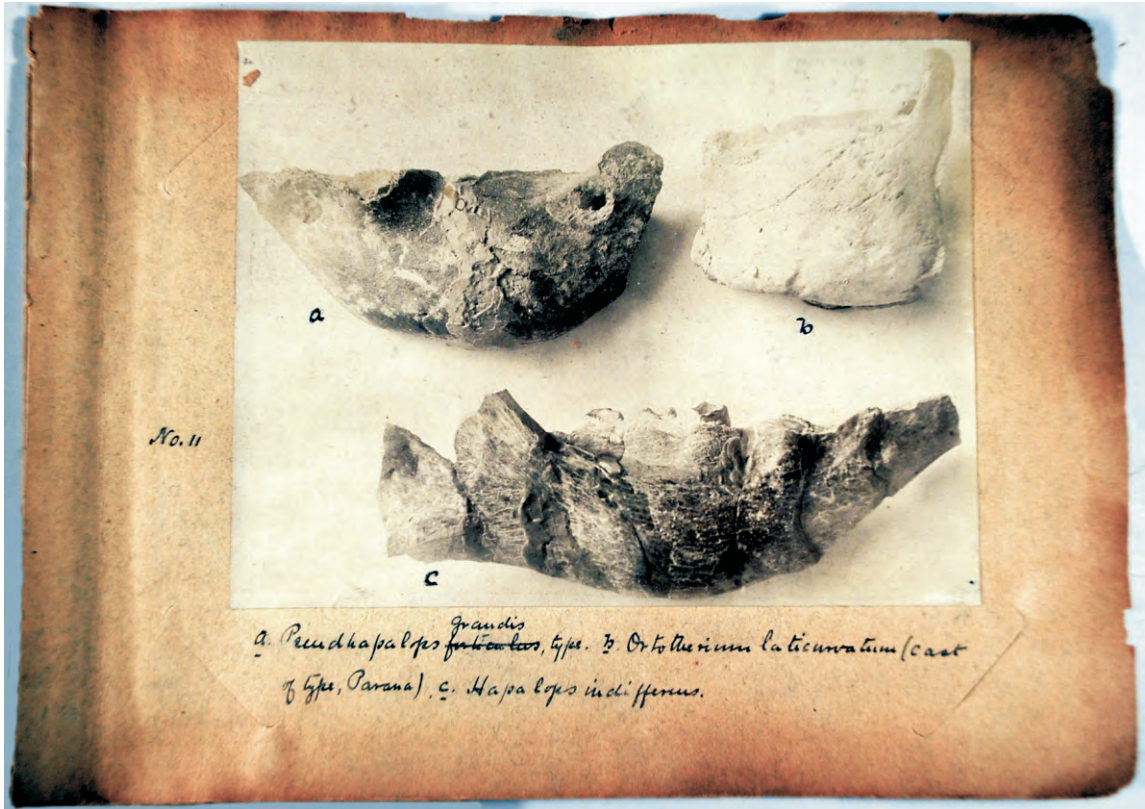
Six pages are missing from the album in its current condition. These are pages 88 (image numbers: 144 *Hegetotherium mirabile*, 231 *Hegetotherium* sp.nov. 323 *Iochilus curtus*, 324 *Iochilus senilis*), 110 (images numbers: 392 *Nesodon imbricatus*, 406 *Nesodon imbricatus*, 450 *Nesodon imbricatus*), 136 (images numbers: 409 *Acrotherium karaikense*, 410 *Acrotherium karaikense*), 152 (images numbers 510 *Albertogaudrya unica*, 511 *Albertogaudrya unica*), 153 (image number 543 *Homalodontotherium segoviae* Type), and 183 (images 337 *Acoelodus debilitatus*, 338 *Acoelodus oppositus* and 339 *Acoelodus oppositus*).











No. 11

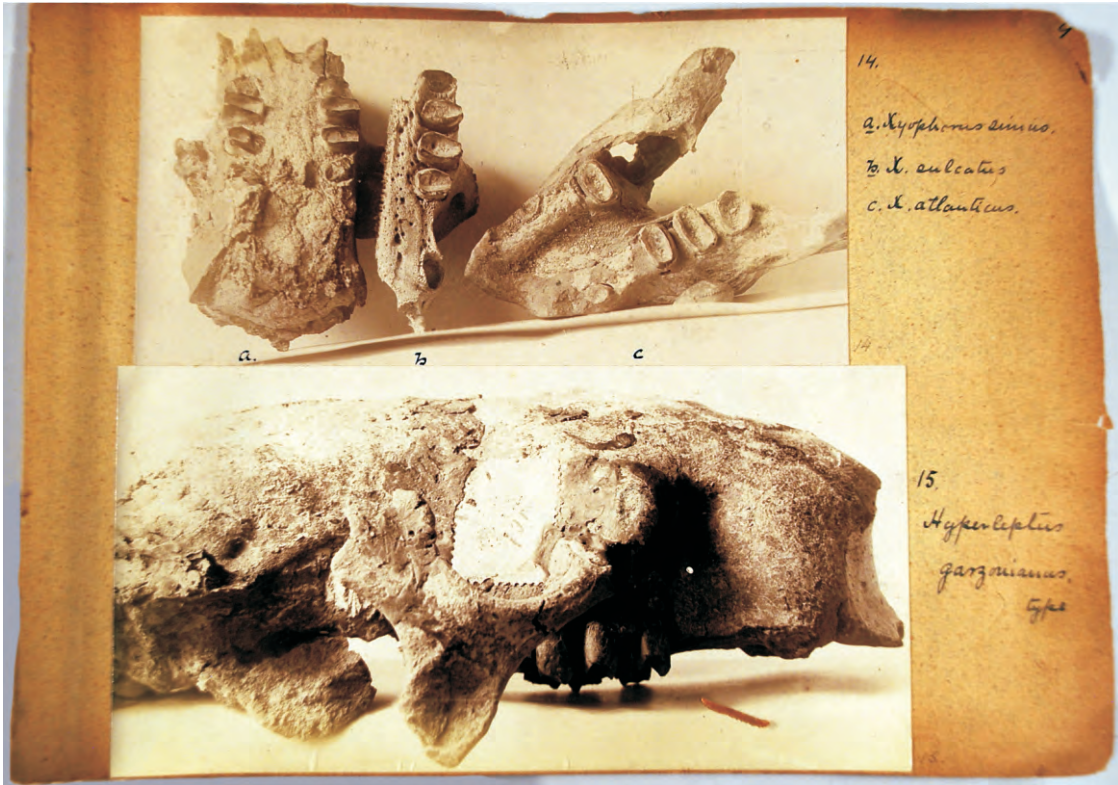
a. *Pseudhapalops* <sup>grandis</sup> ~~frankensis~~, type. b. *Orthoceras* *laticornatum* (cast of type, Paraná). c. *Hapalops* *indiferens*.

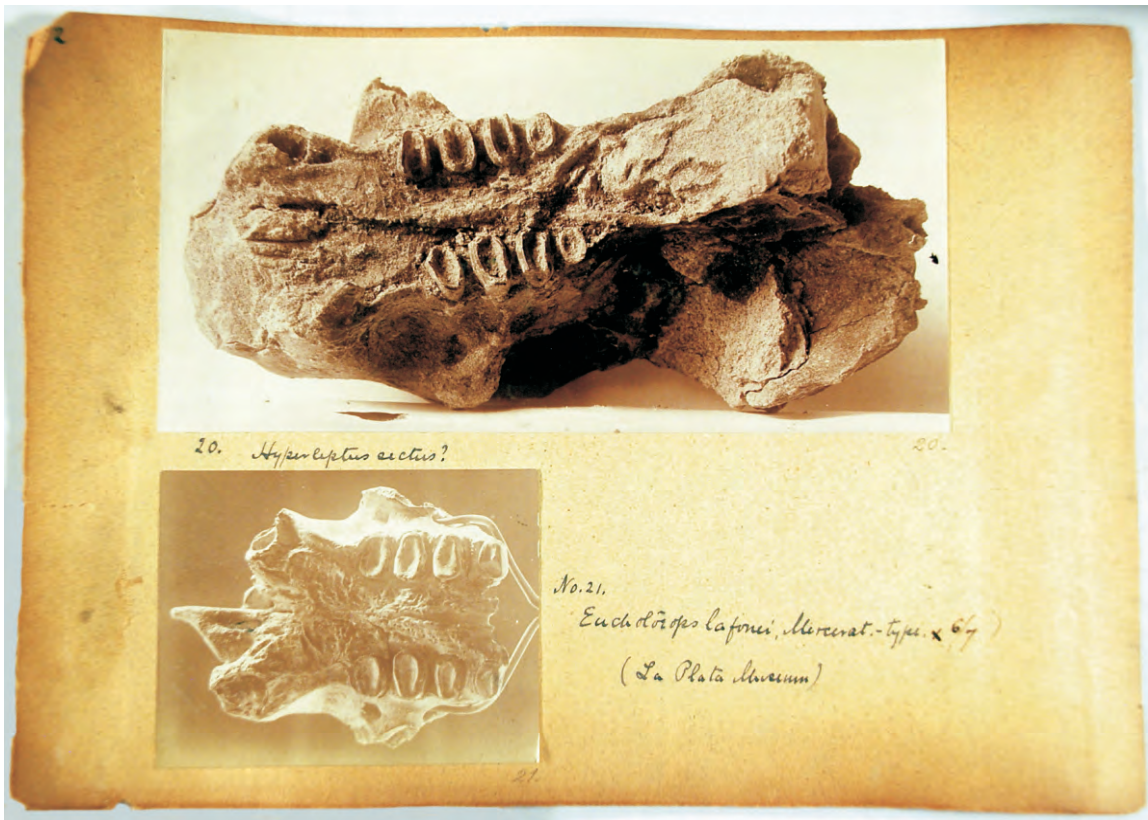


13. *Xyloceras*  
*abundans*



12. a. *Amphihapalops* *gallianus* type. b. *A. caduca* type. c. *A. curvimanus* type. d. *Orthoceras* *rectangulatum* type.















36 *Pelecyodon cristatus*, type.

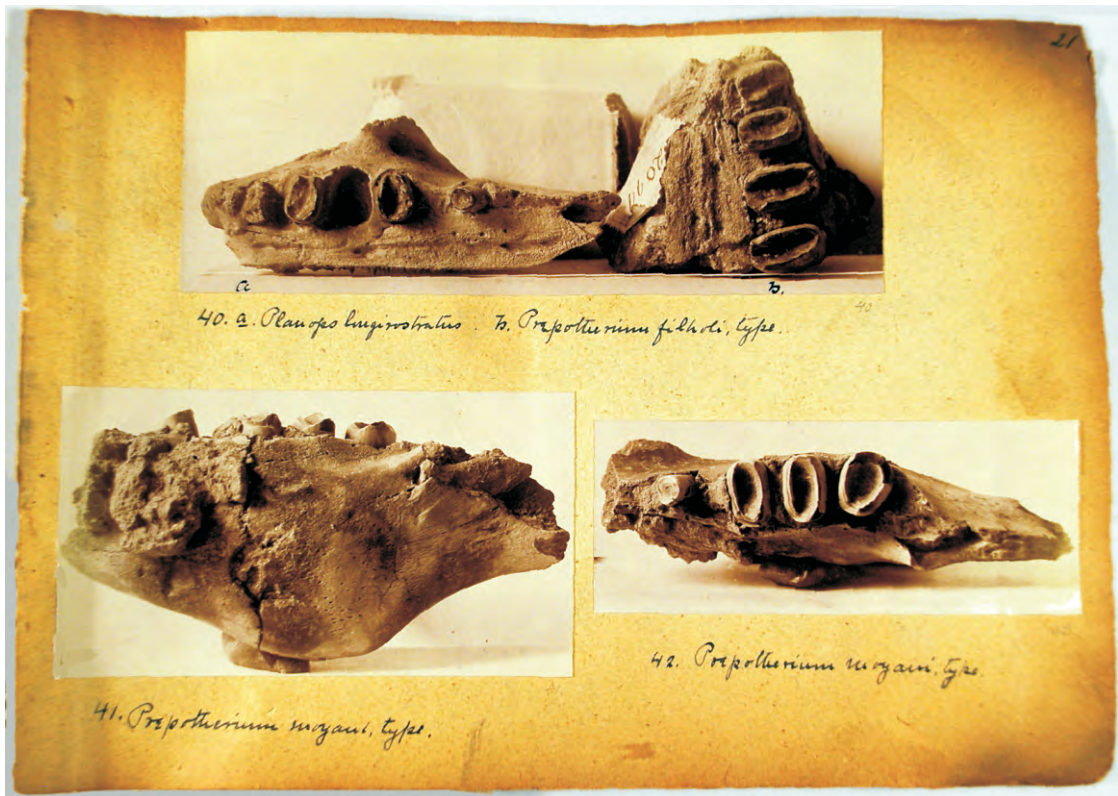
86

37. *Pelecyodon cristatus*, type.

b  
c  
38. *Pelecyodon cristatus*.  
38. *Ichneumon denticatus* fractus.

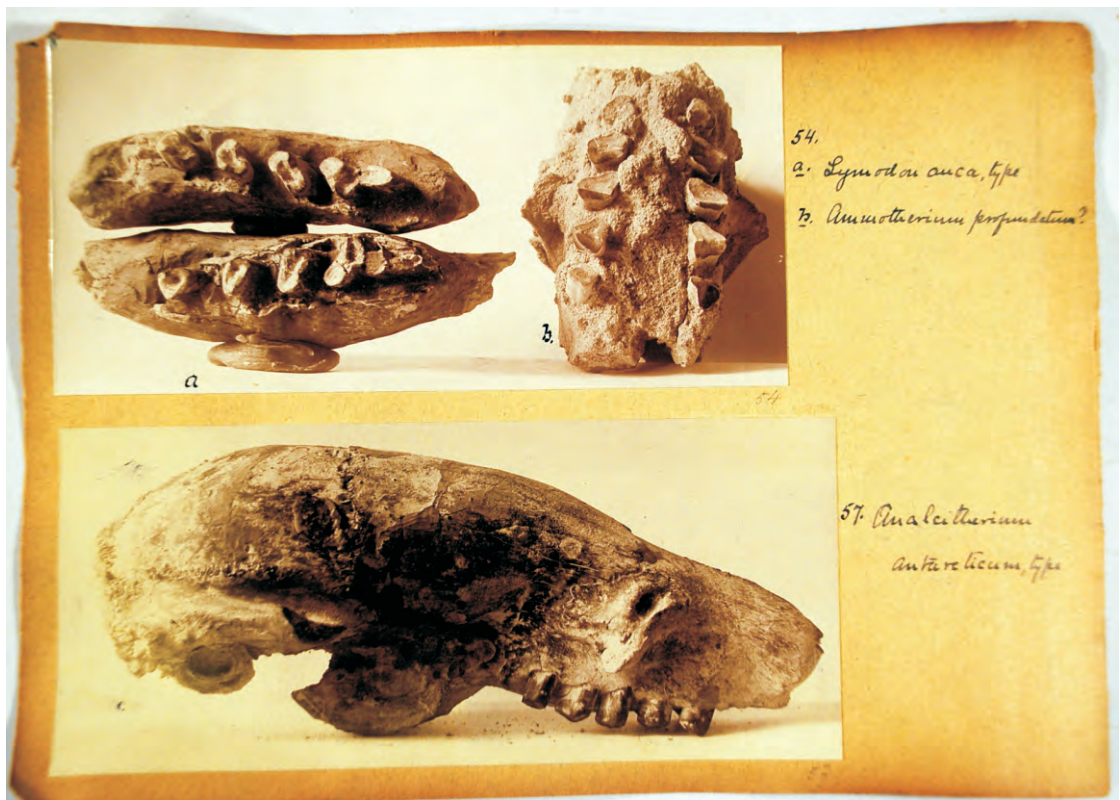


39. a. *Pelecyodon petraeus*, type. b. *Uranoscyrtus bimuliformis*, type. c. *Pelecyodon arcuatus*, type.  
d. *P. robustus*, type. e. *P. cristatus*, type.

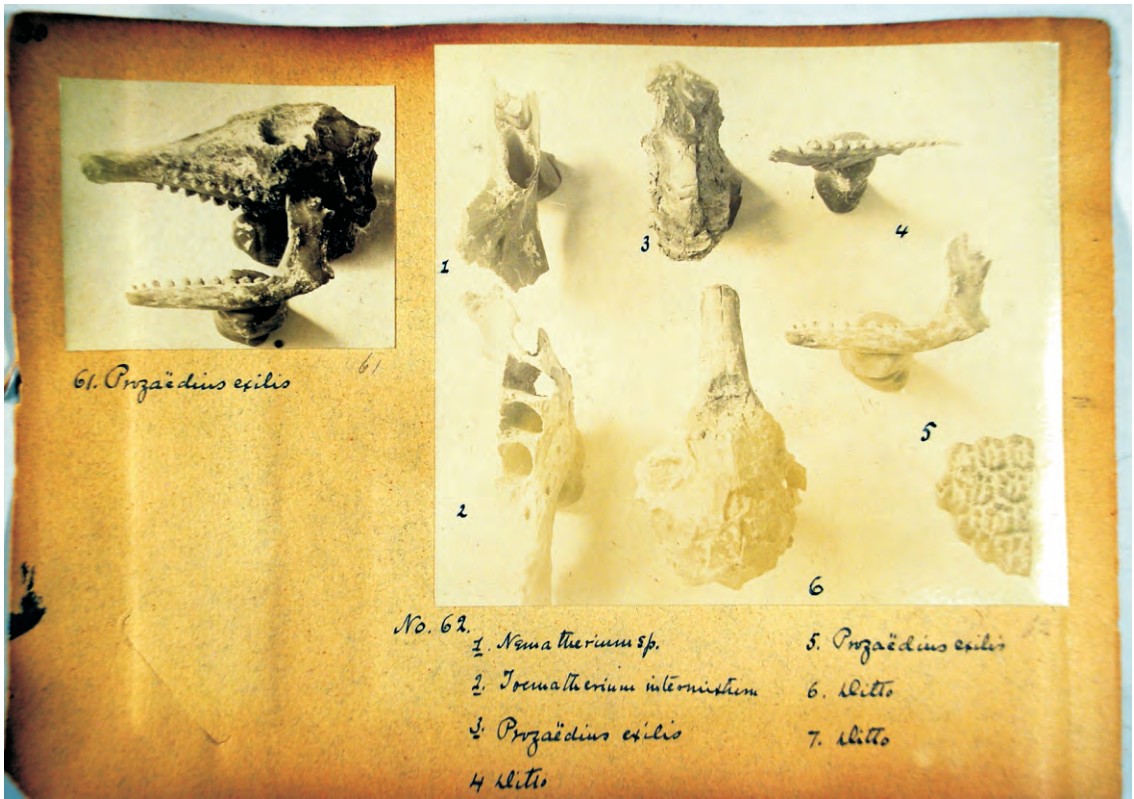
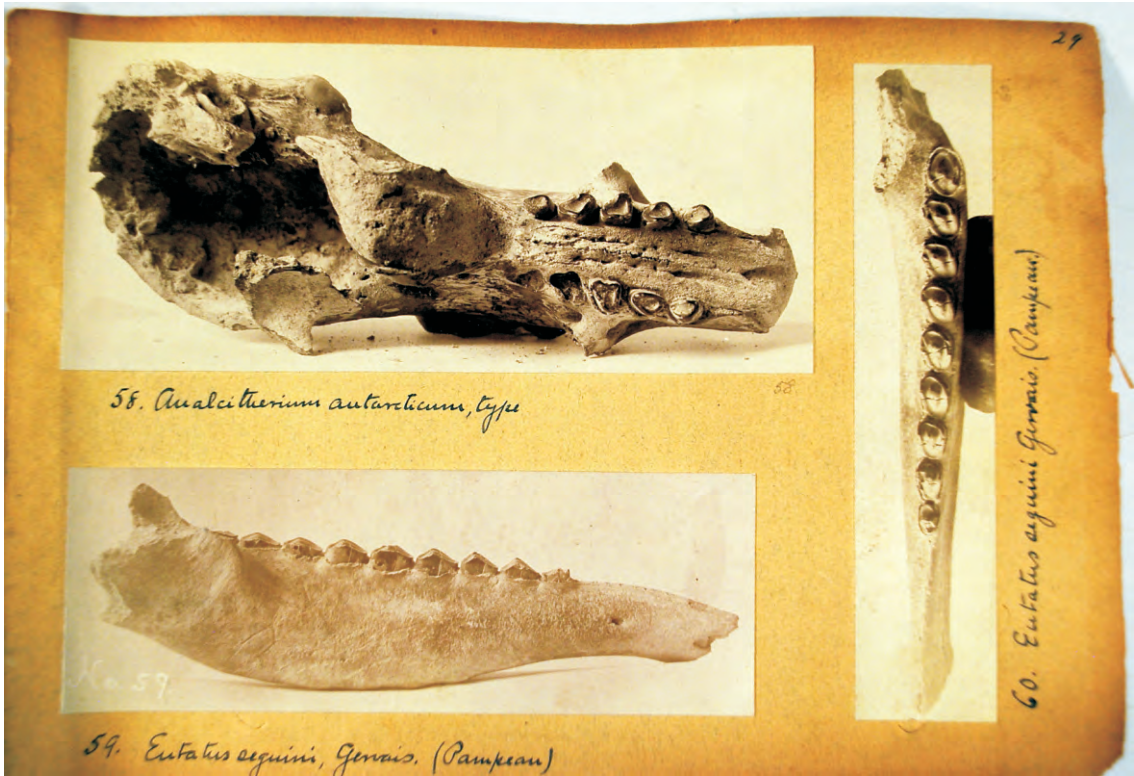






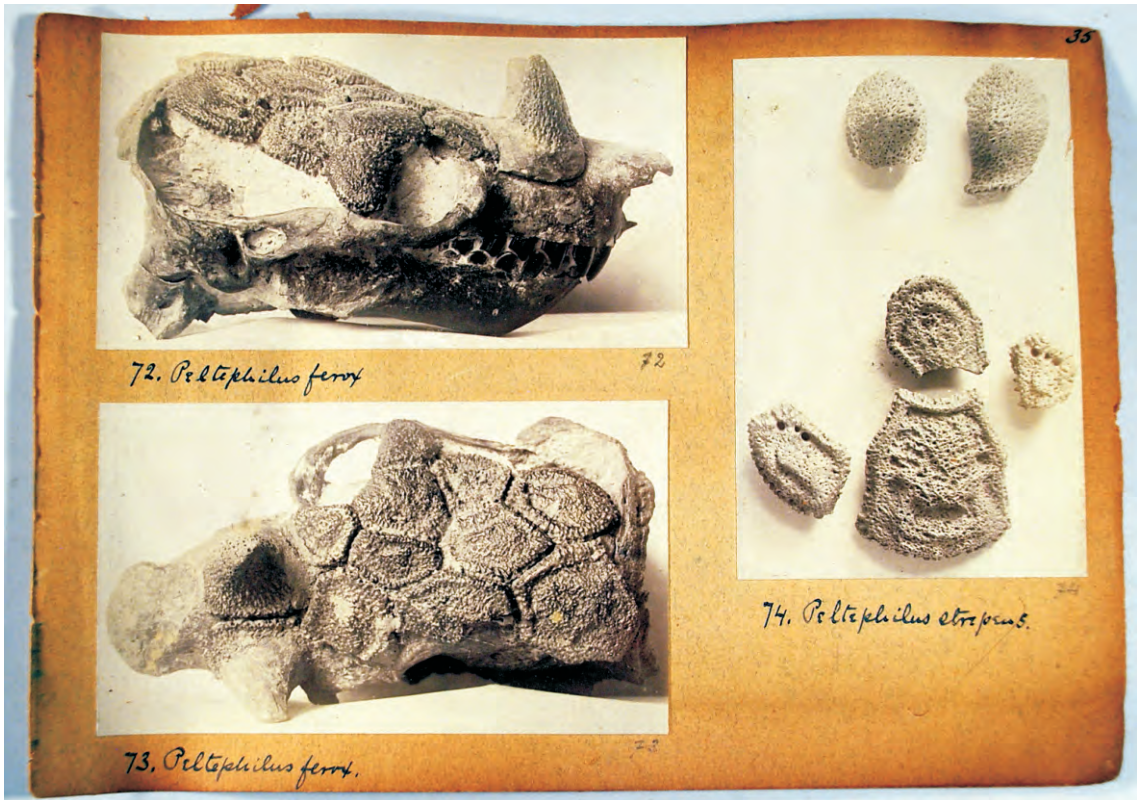












72. *Peltophilus ferrox*

73. *Peltophilus ferrox*.

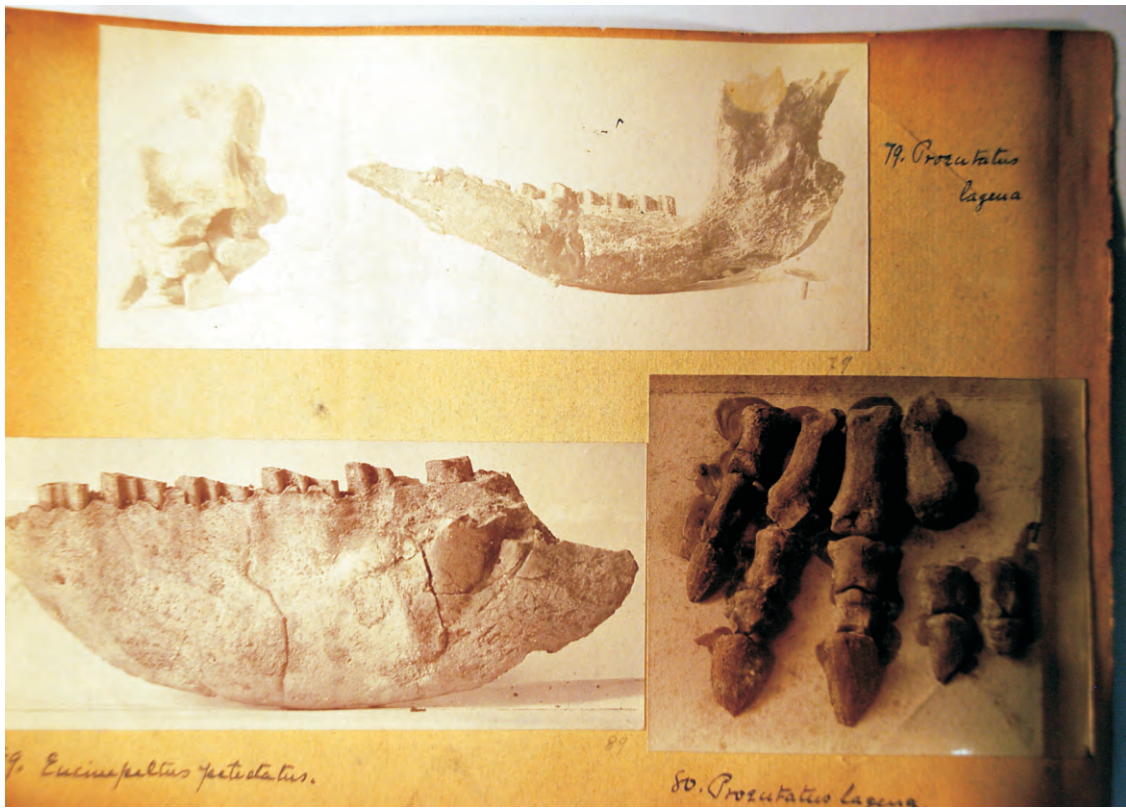
74. *Peltophilus strepens*.

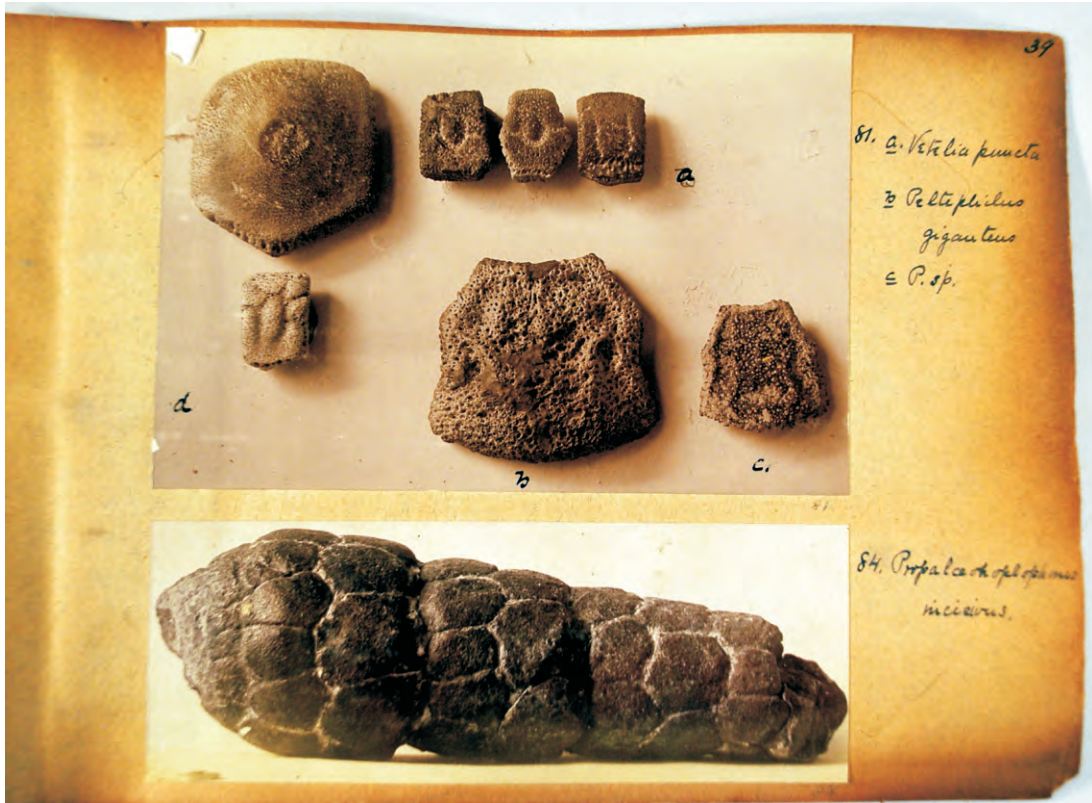


75. a. *Peltophilus giganteus*. b. *P. ferrox*.

77. *Procutatus lagena*.

82. a. *Lymnocypris perfecta*  
b. *Nannotherium* sp.



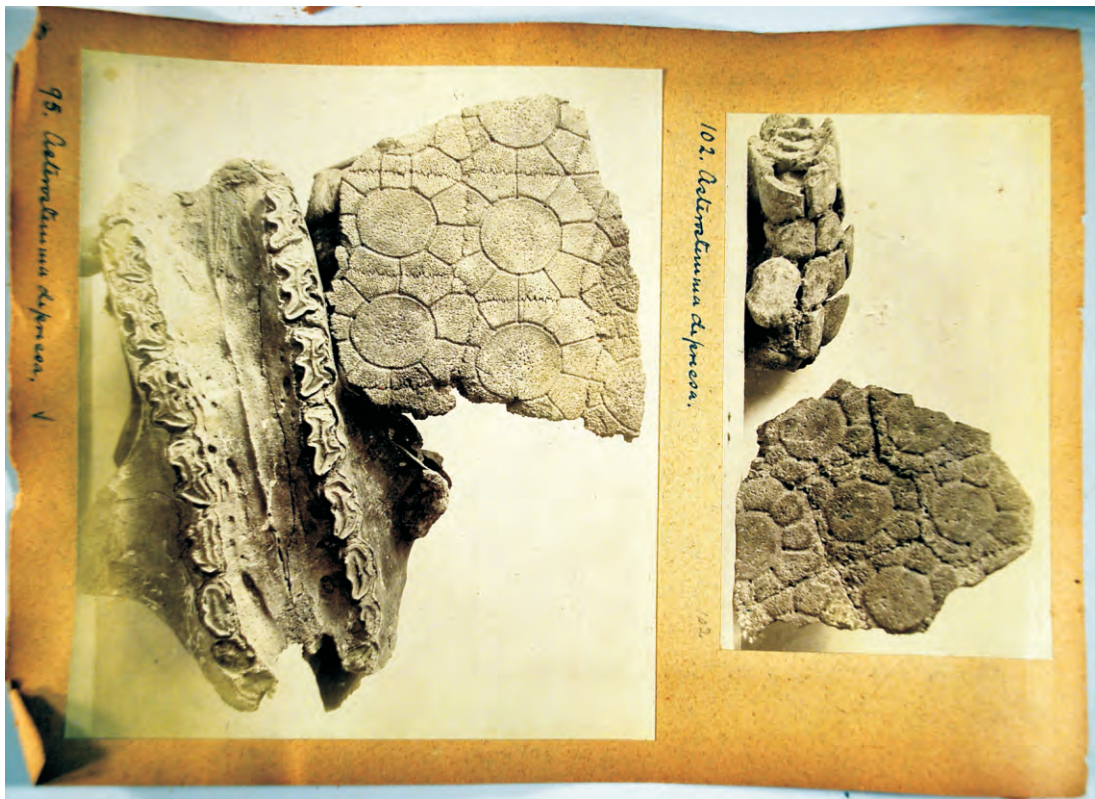
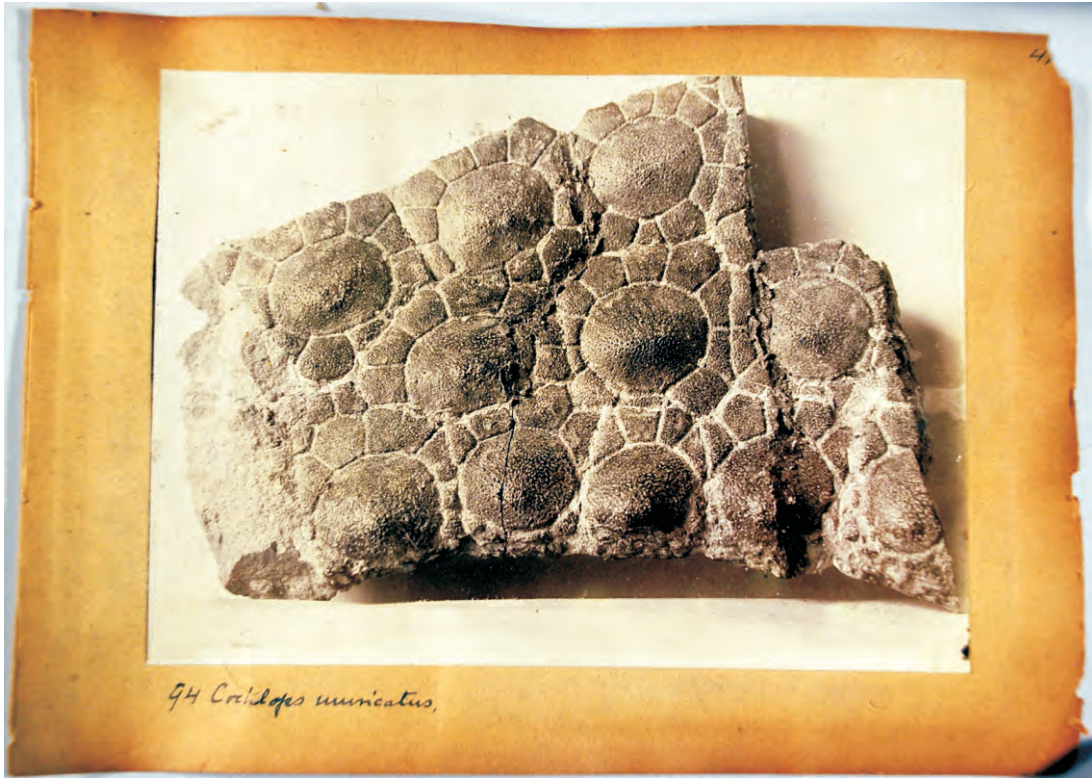


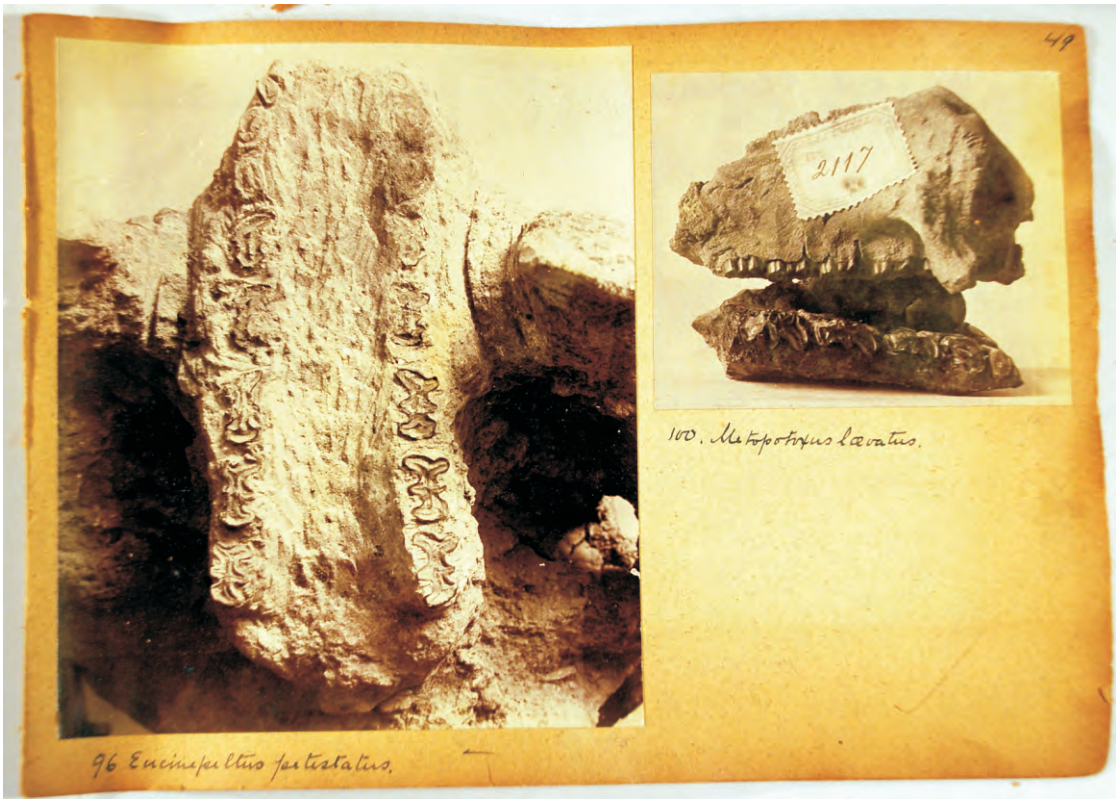


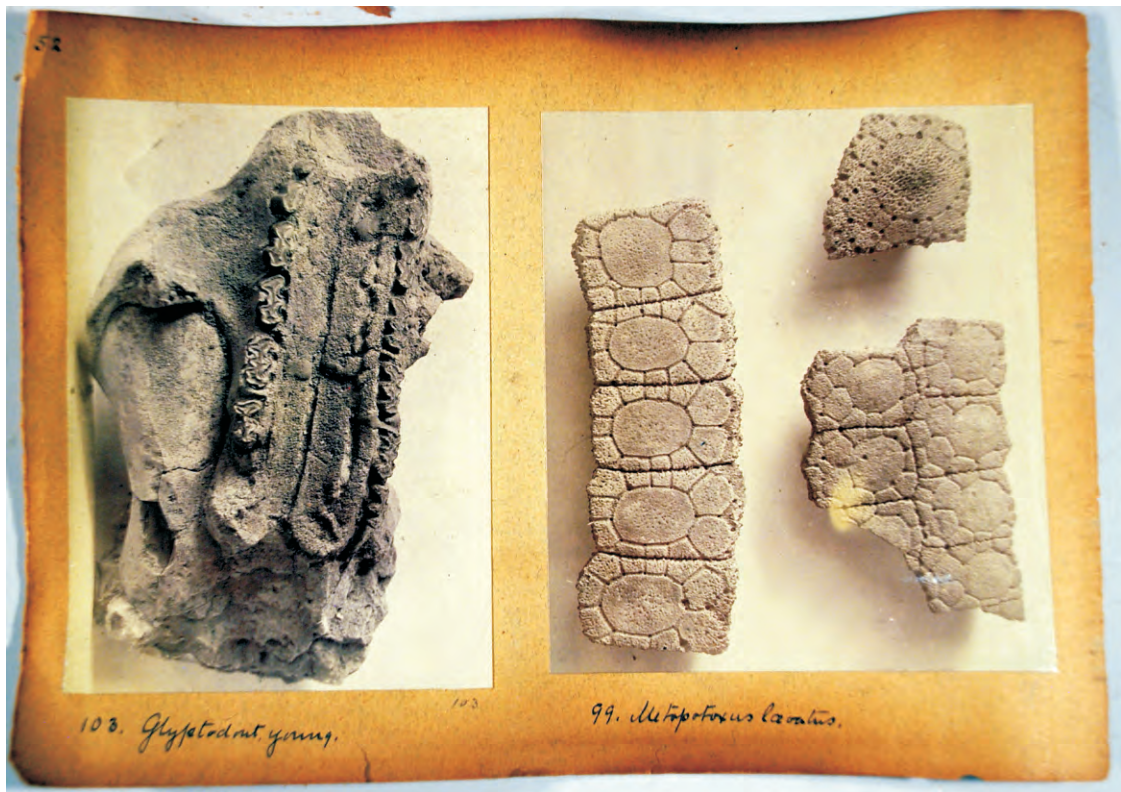
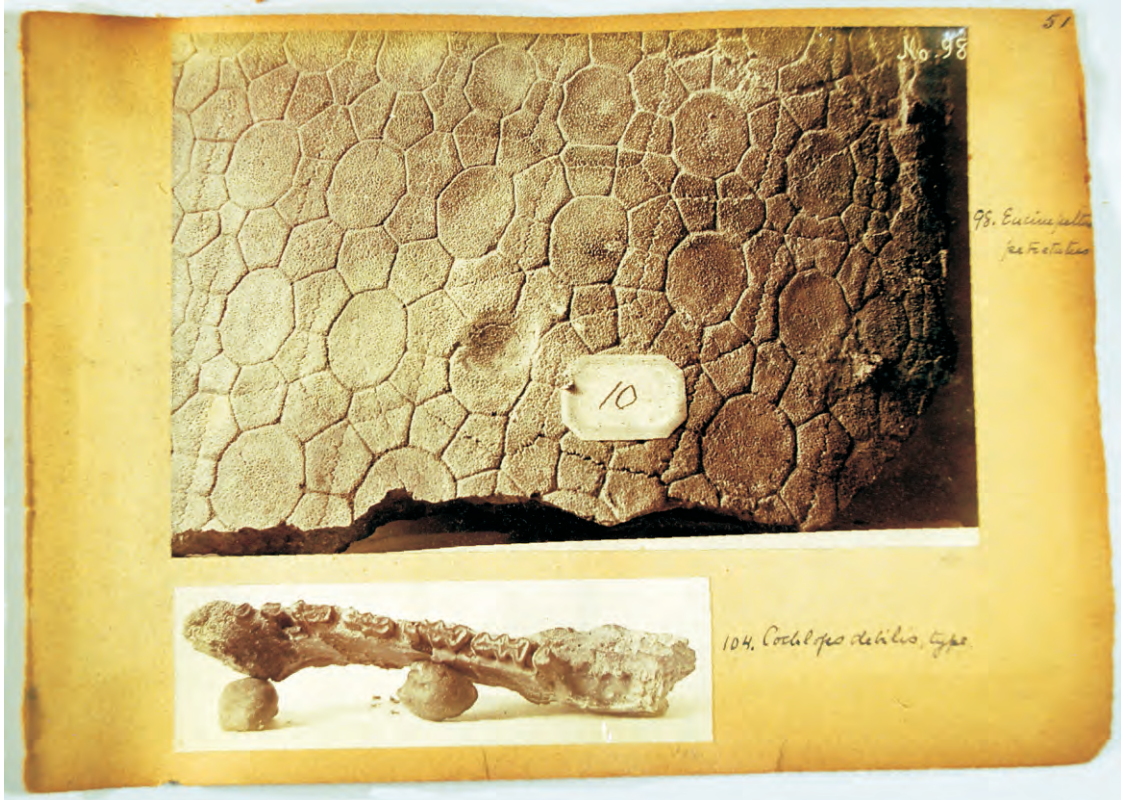






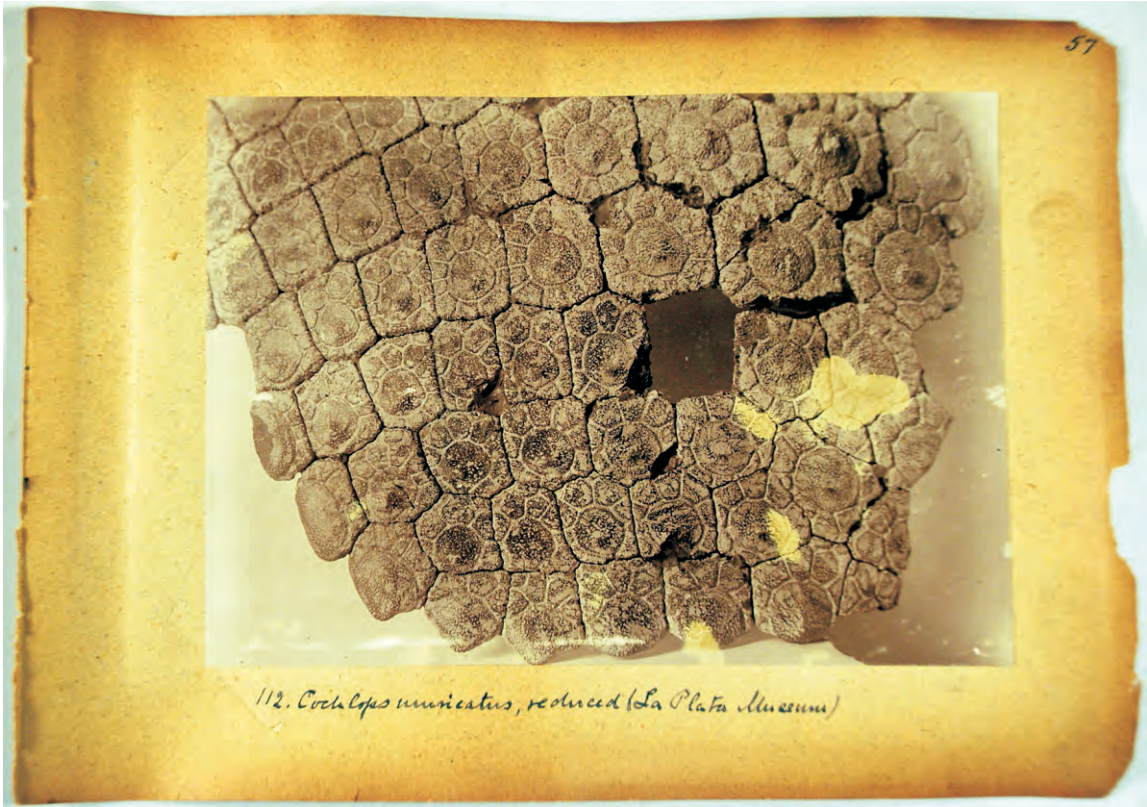




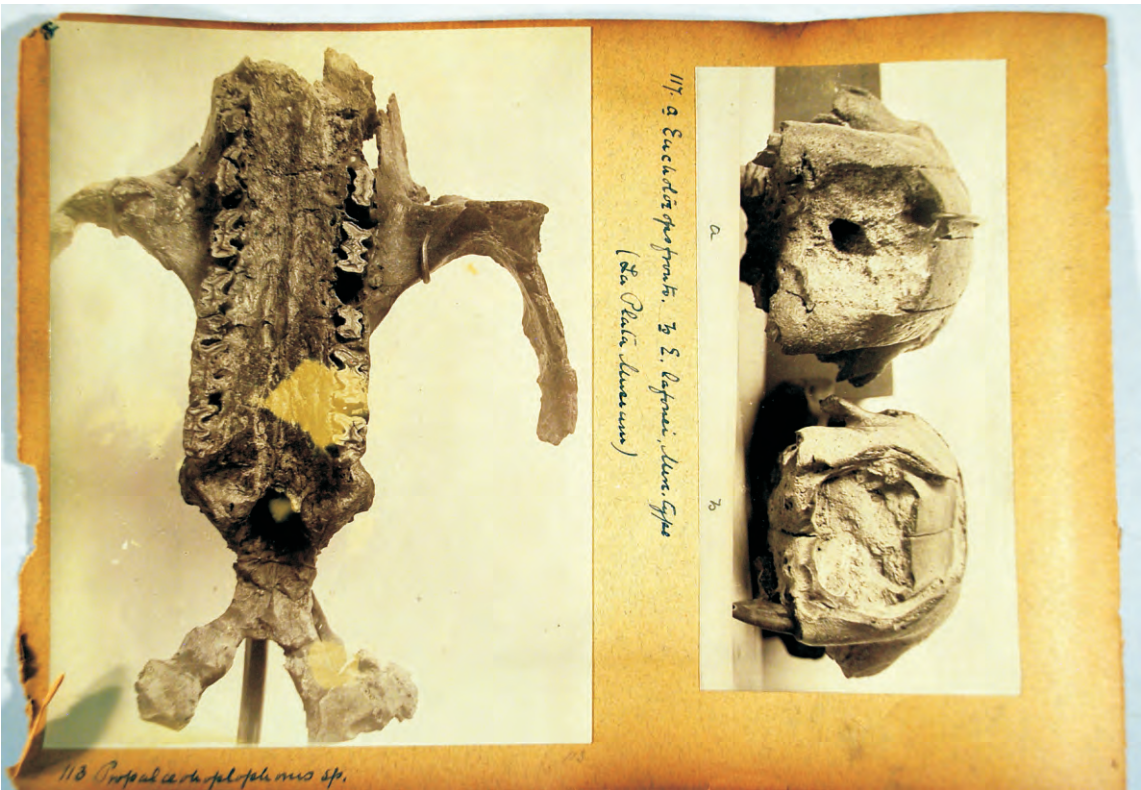






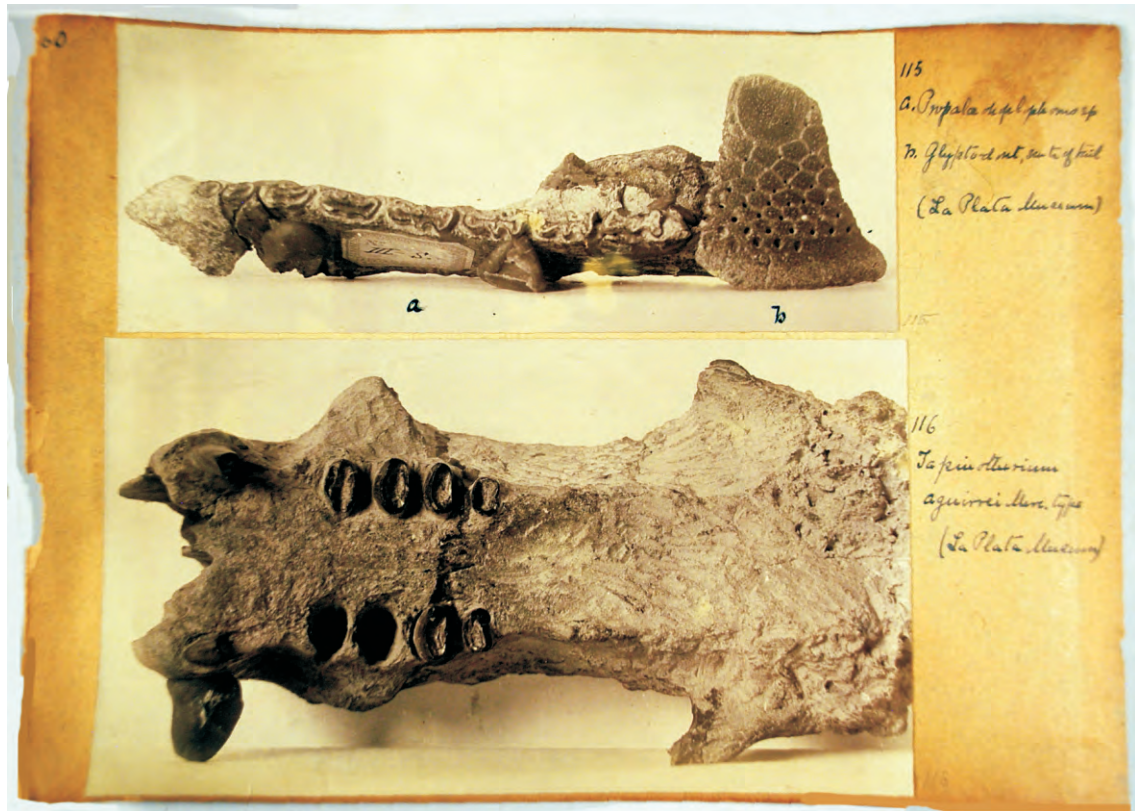


112. *Cochlelops unguicatus*, reduced (La Plata Museum)



117. a *Eucalothia profunda*, b *E. latiuscula*, (La Plata Museum)

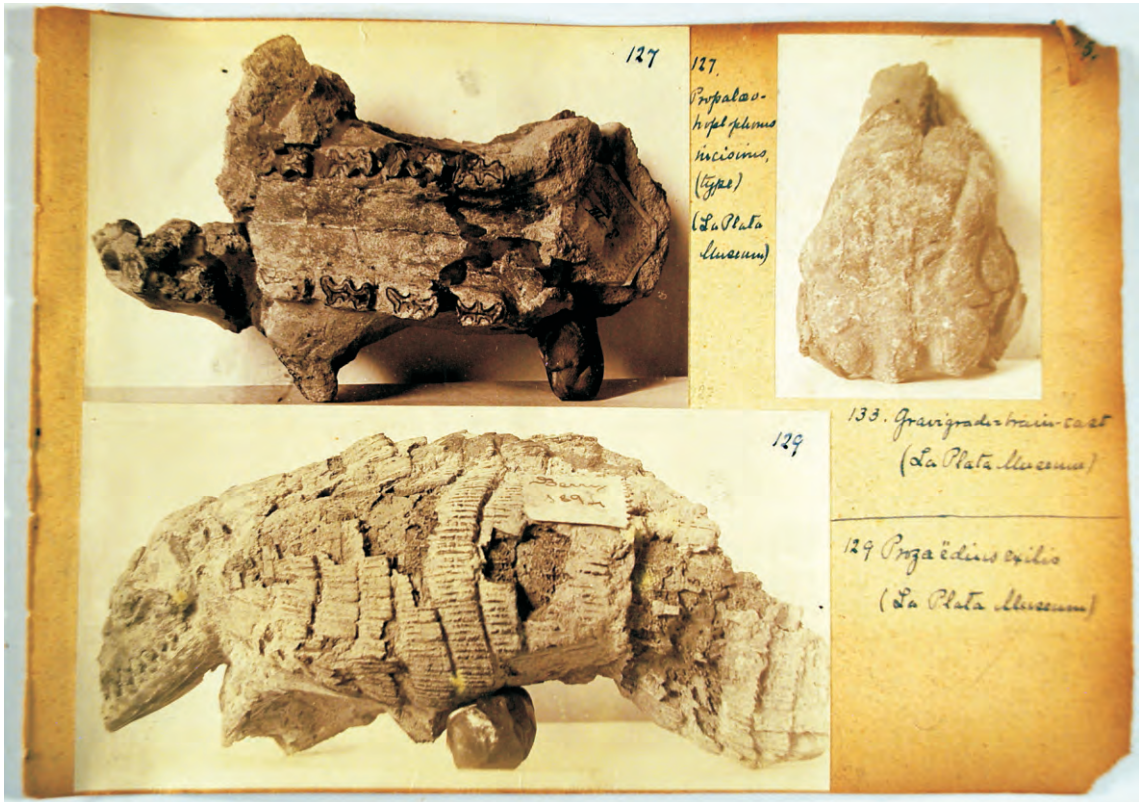
118. *Propalaeophloeus* sp.



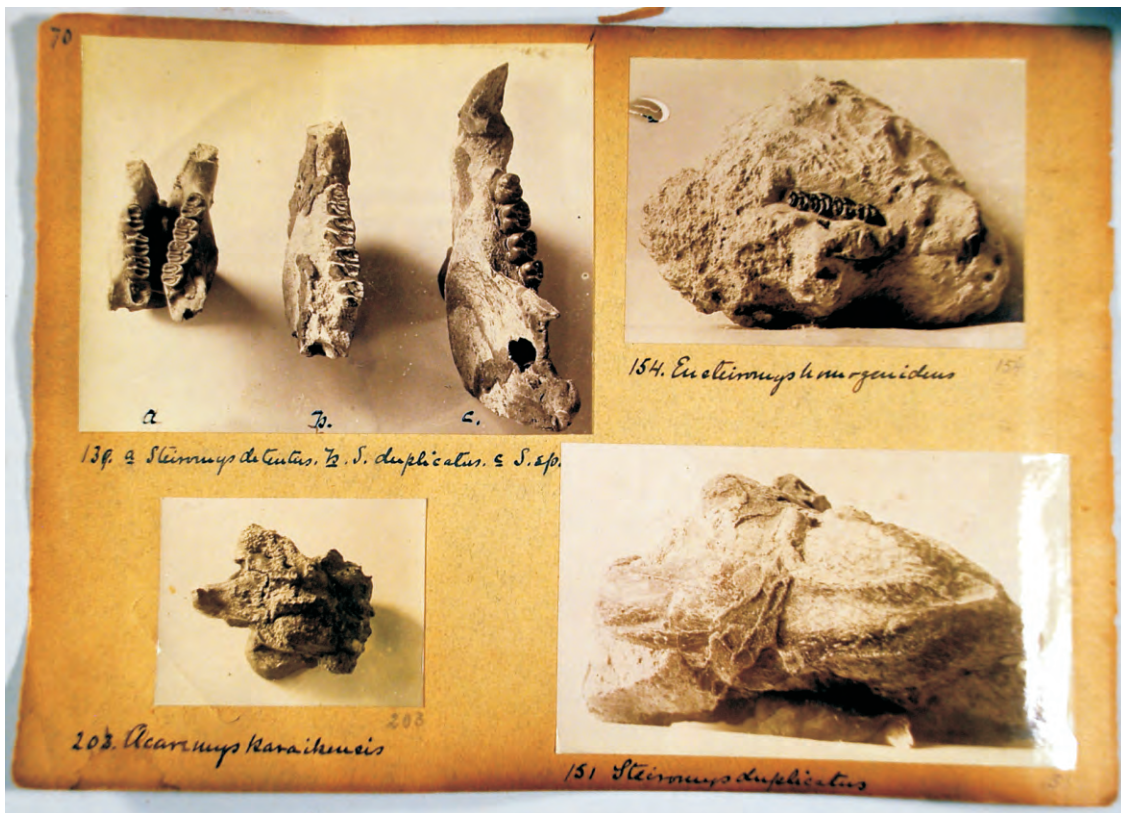


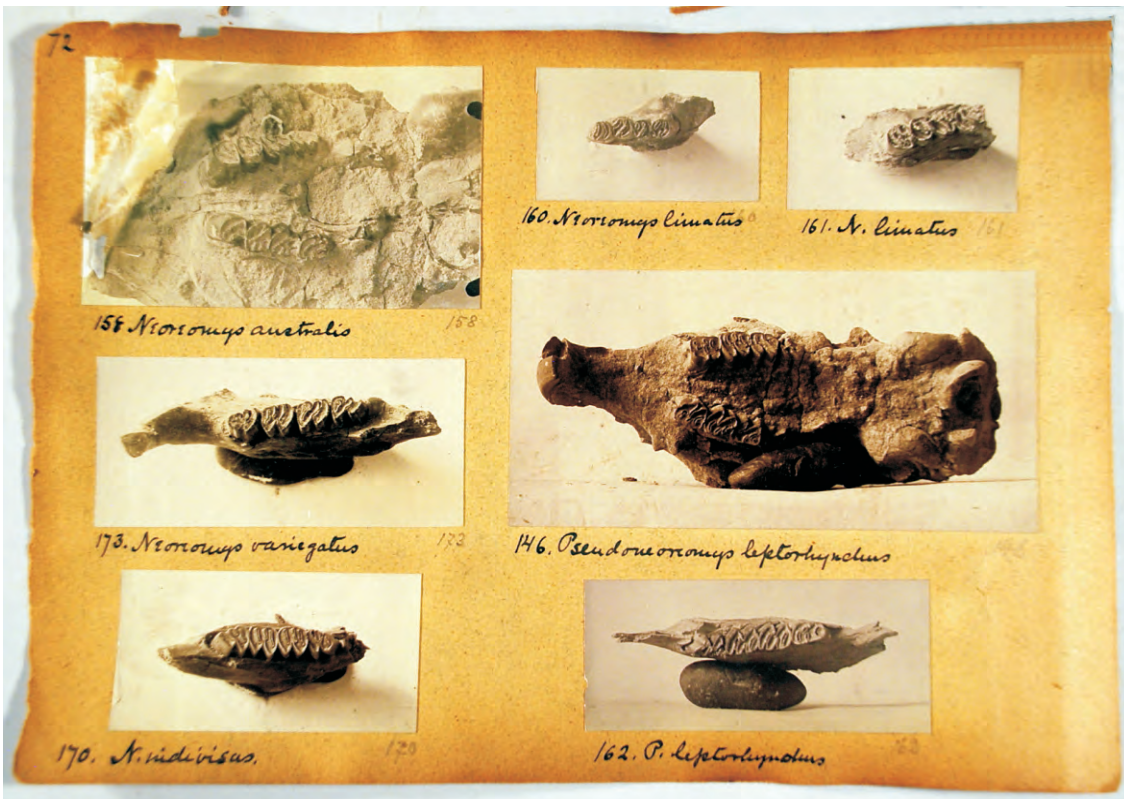


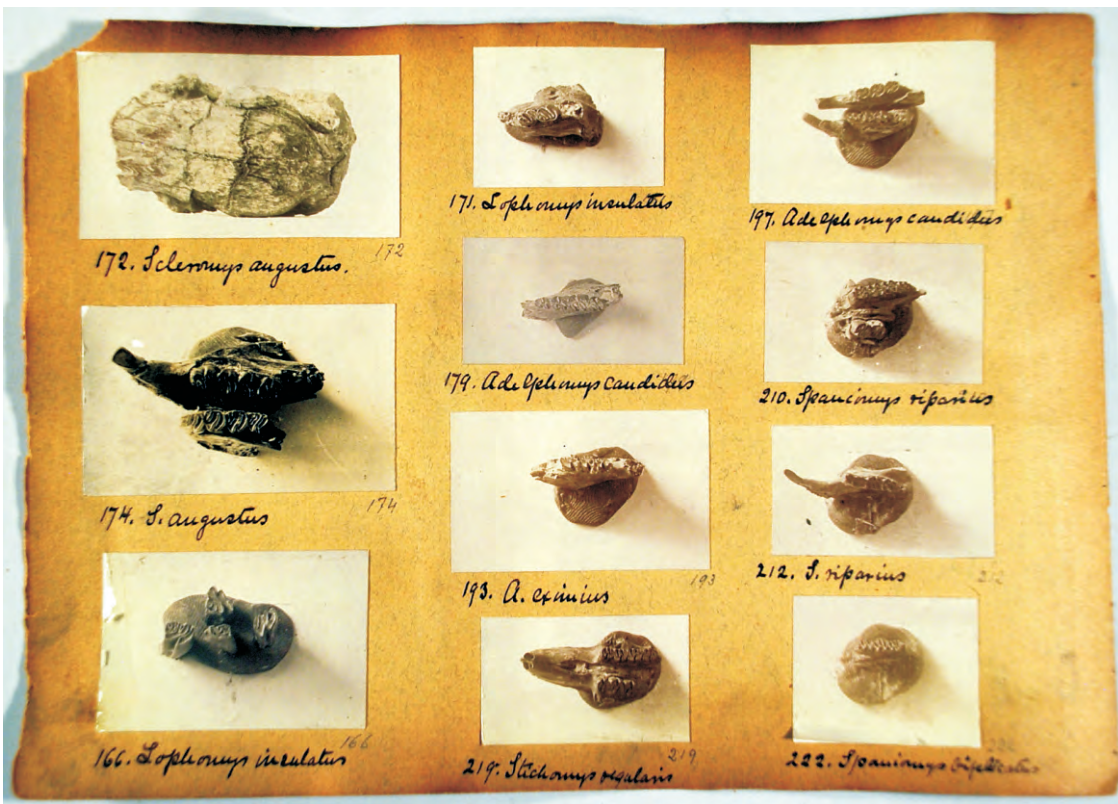
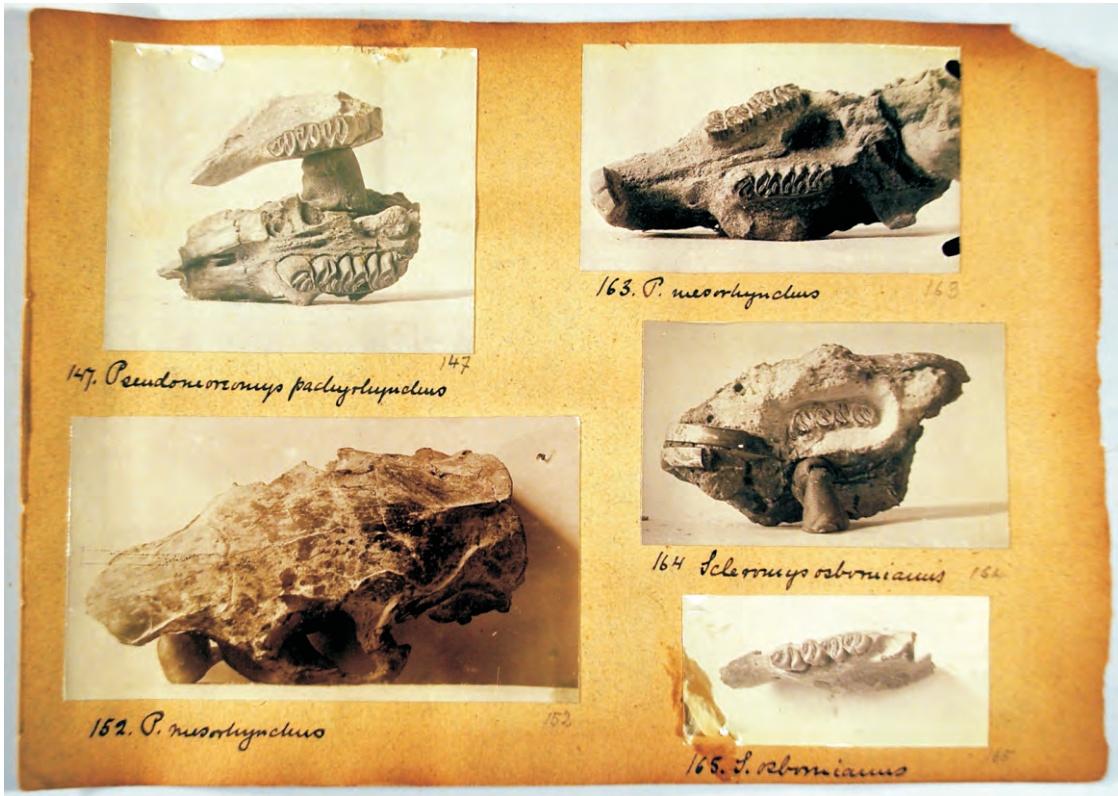


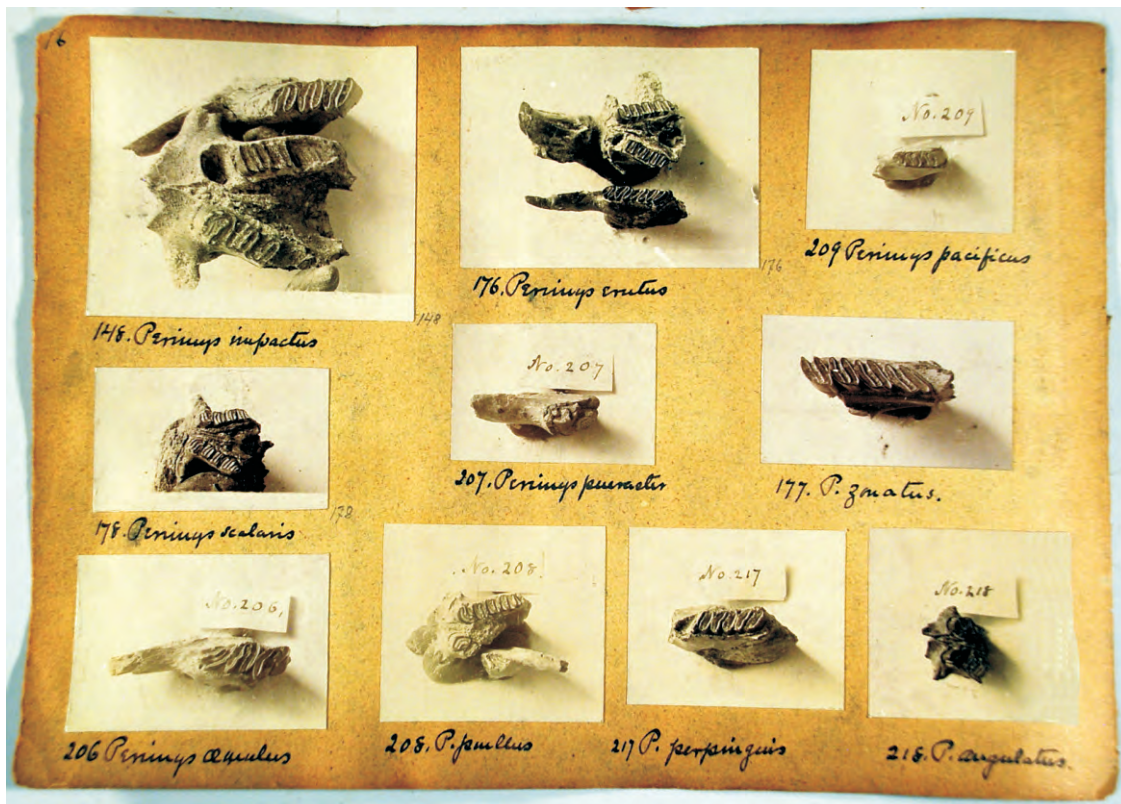




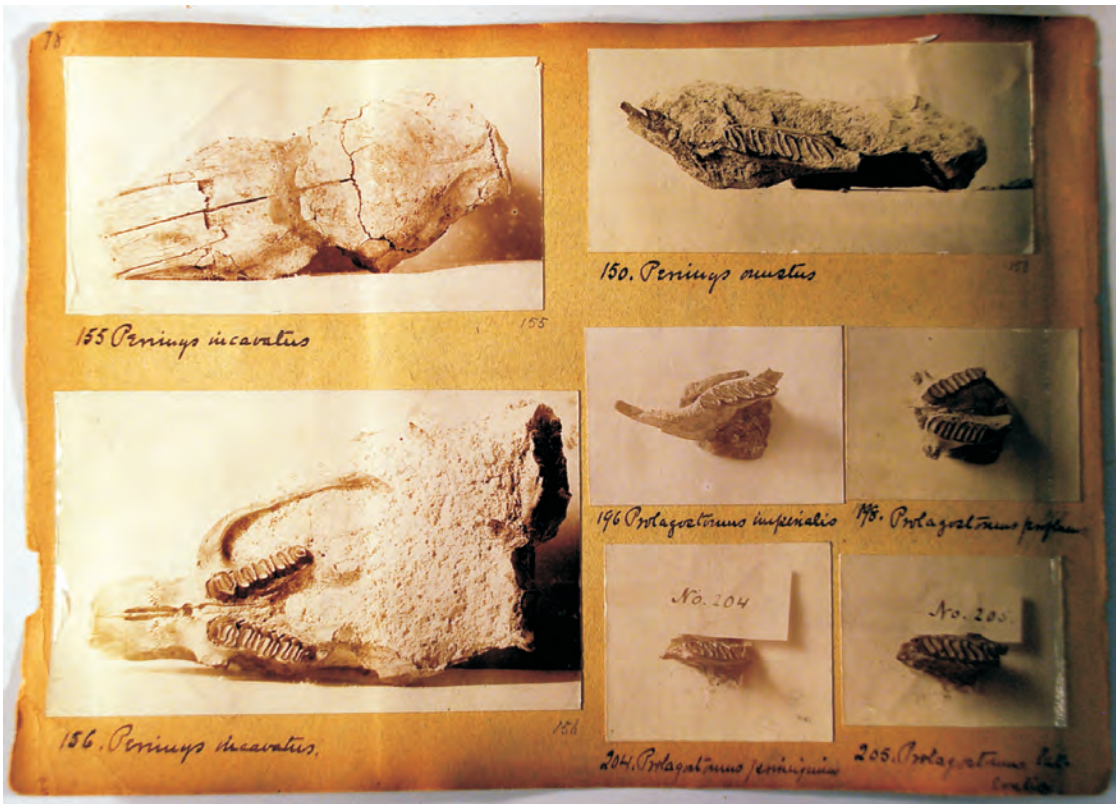
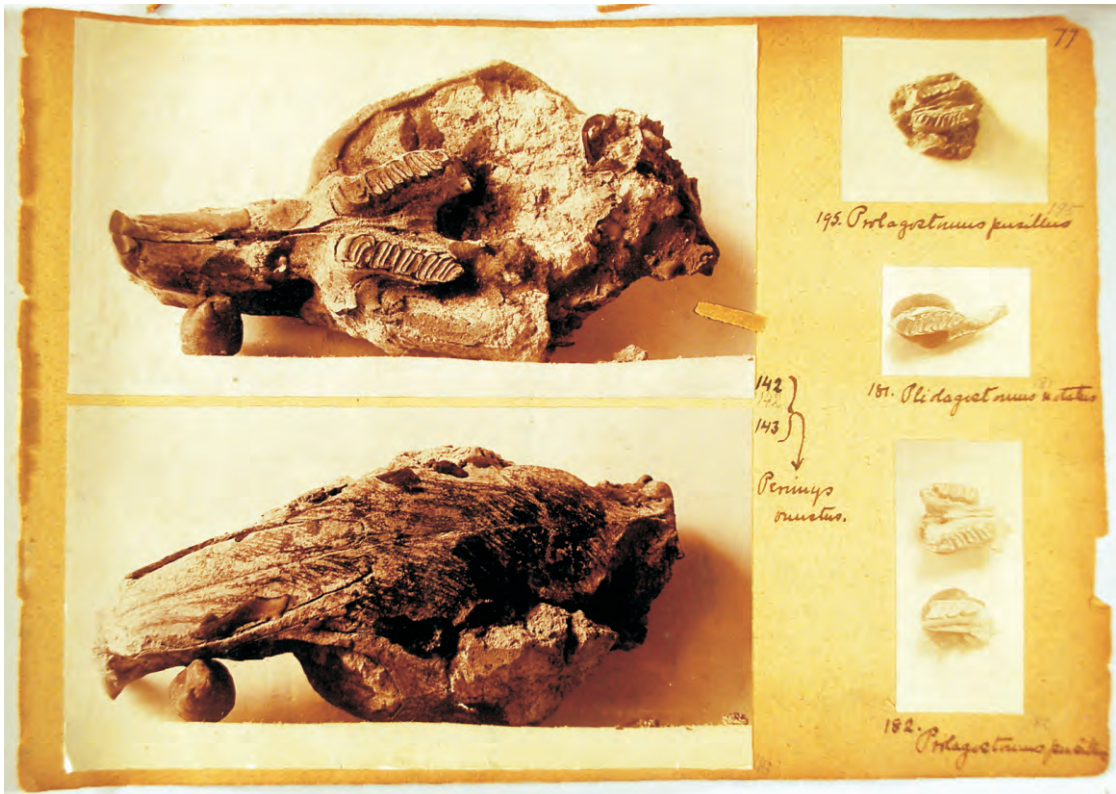


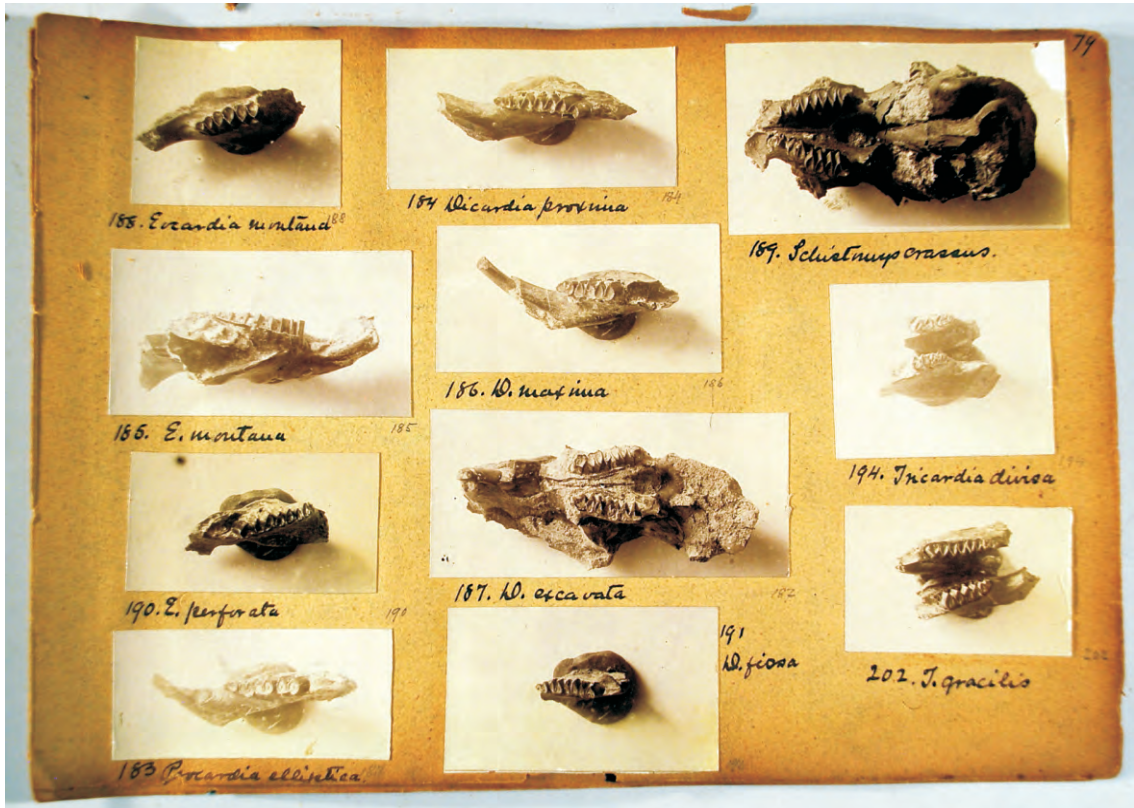


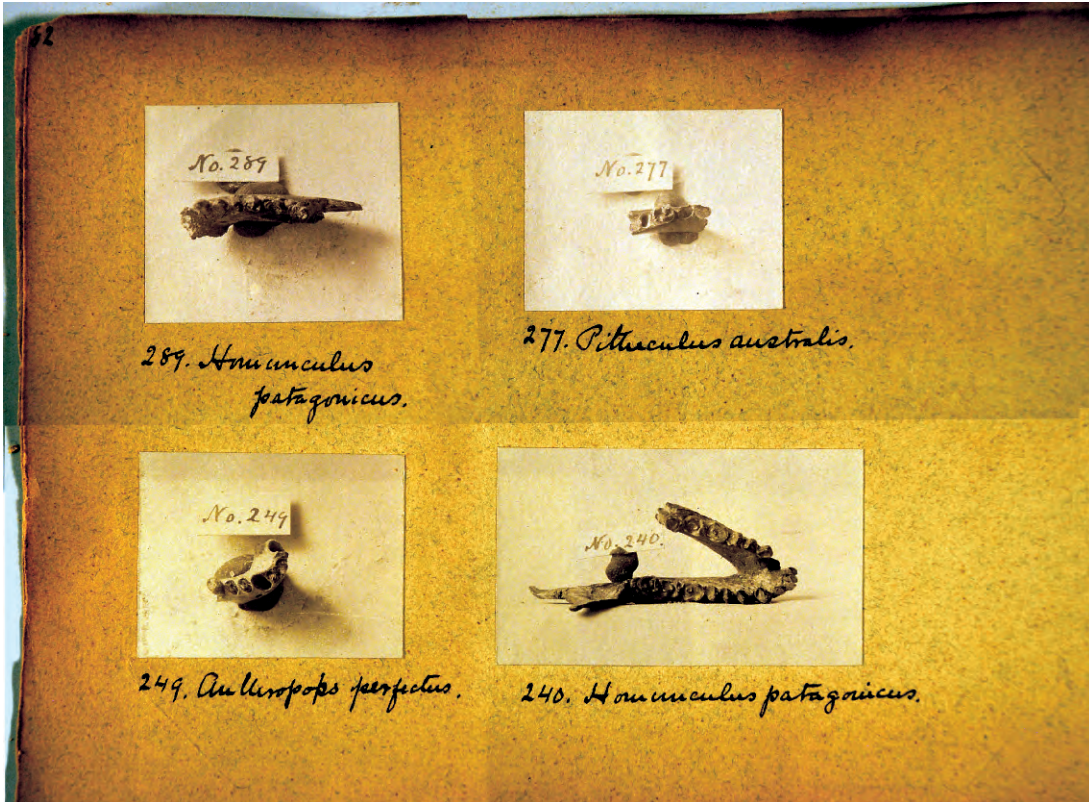










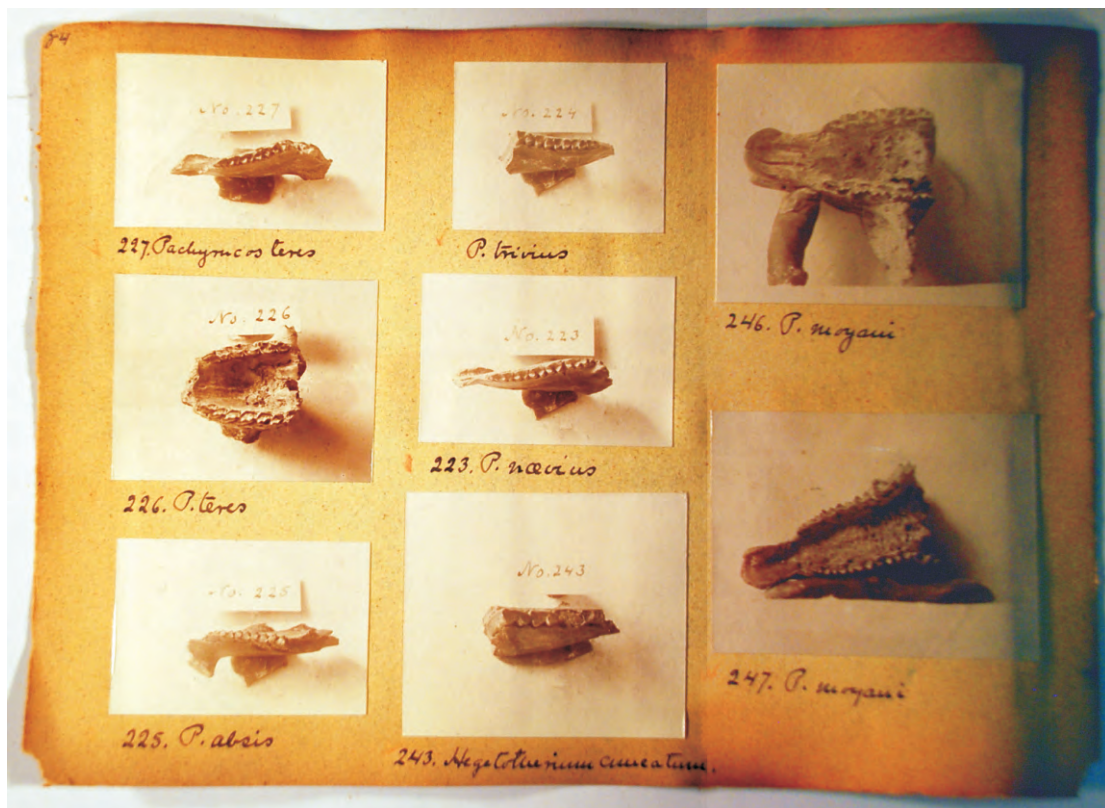
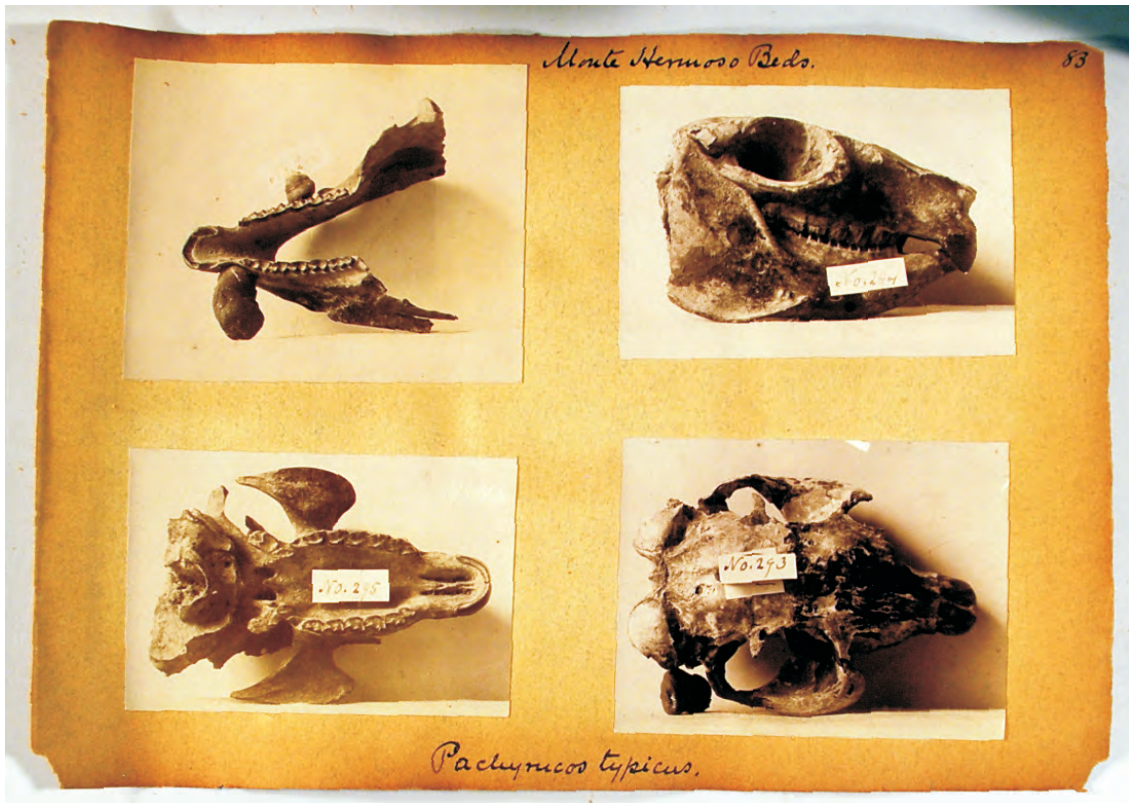


289. *Homunculus patagonicus.*

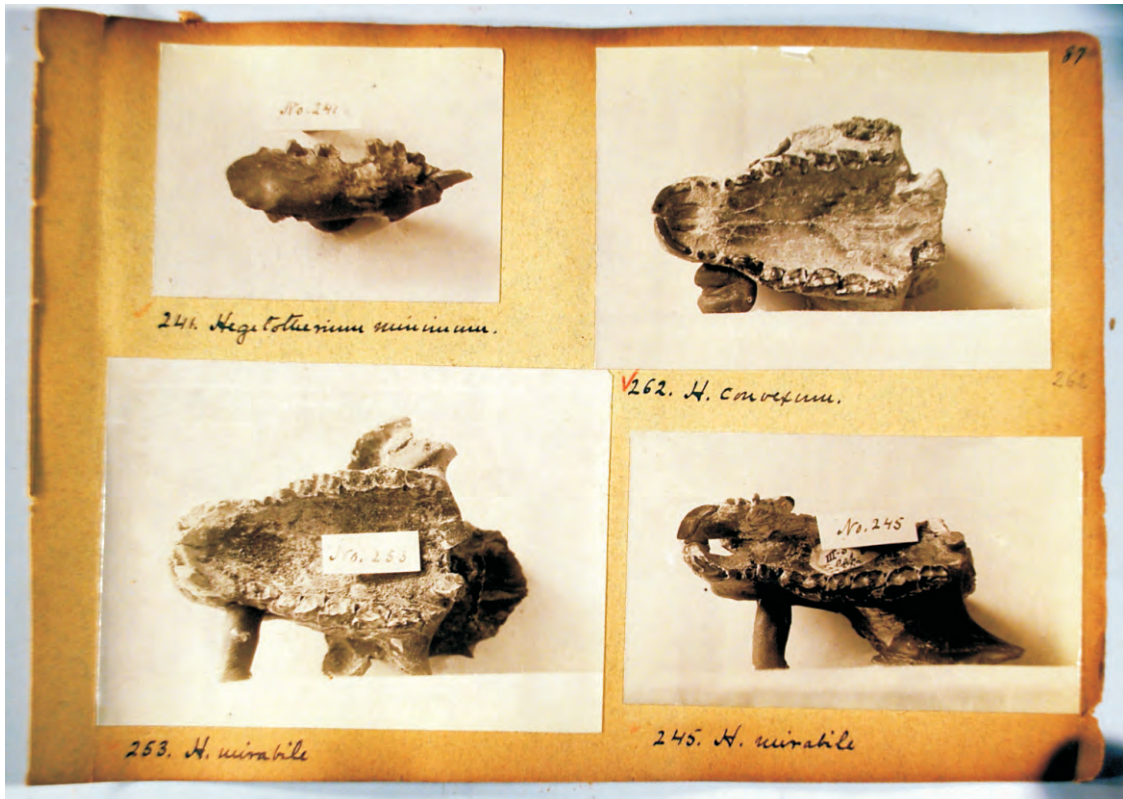
277. *Pitheculus australis.*

249. *Australopos perfectus.*

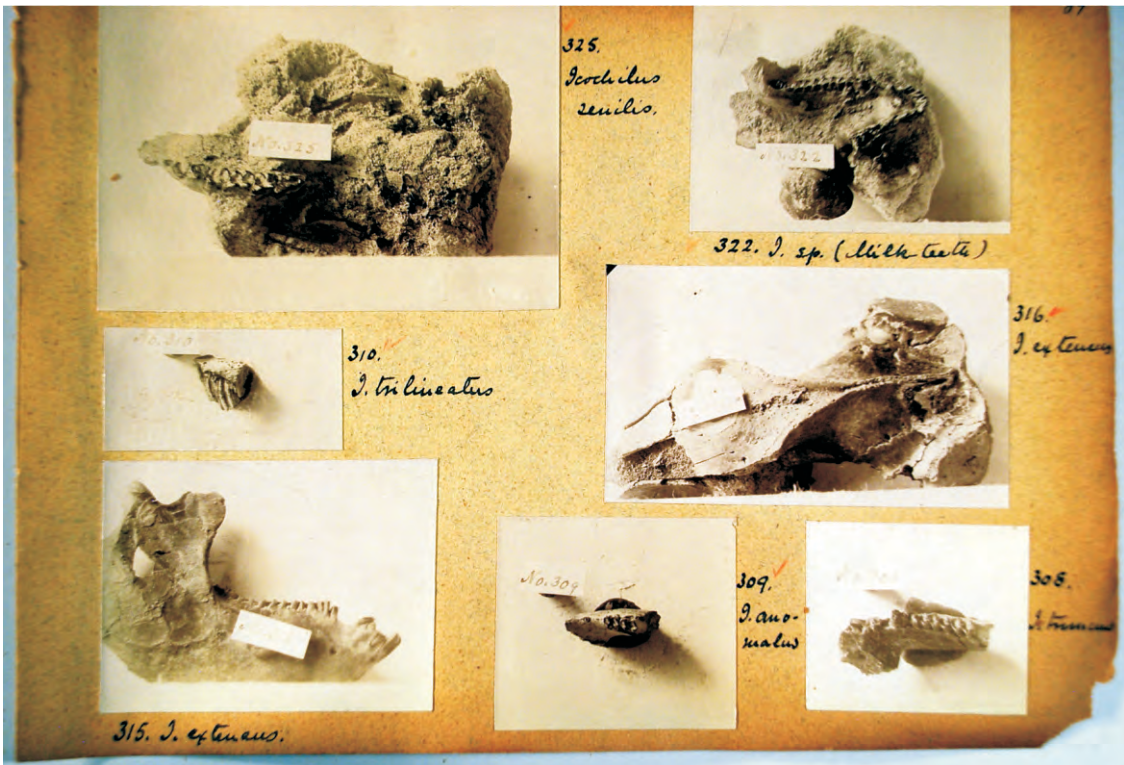
240. *Homunculus patagonicus.*





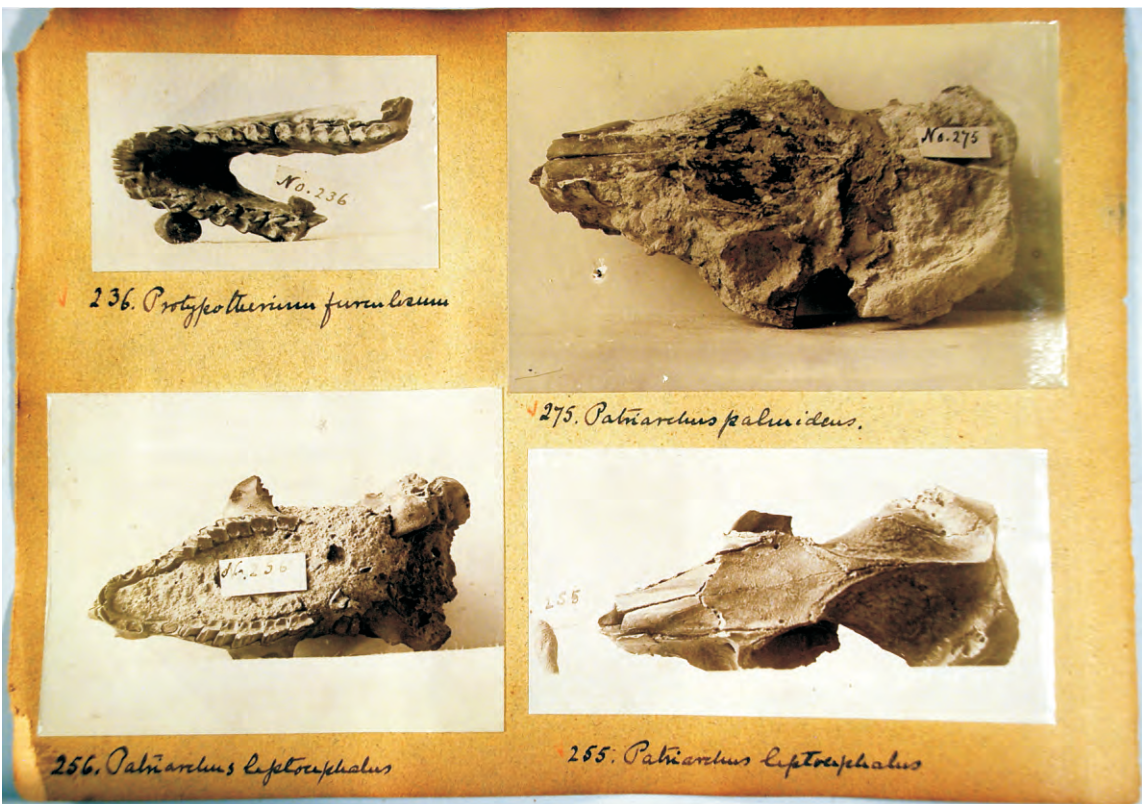
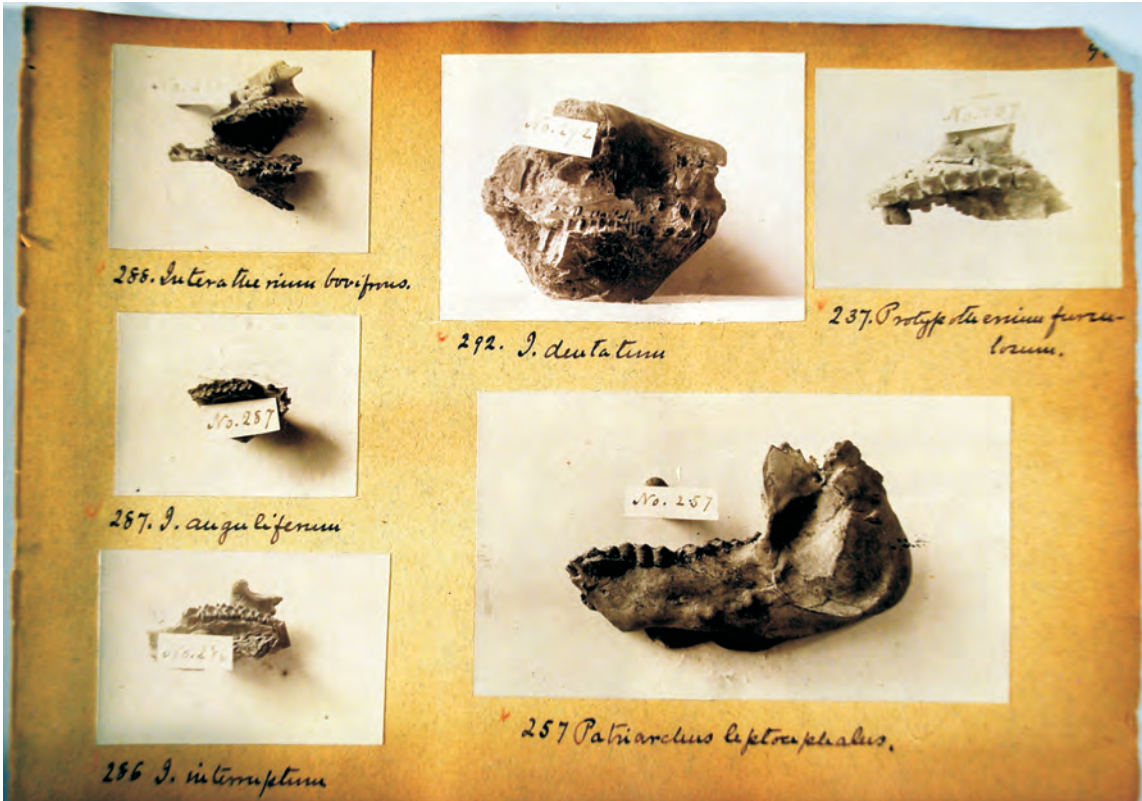


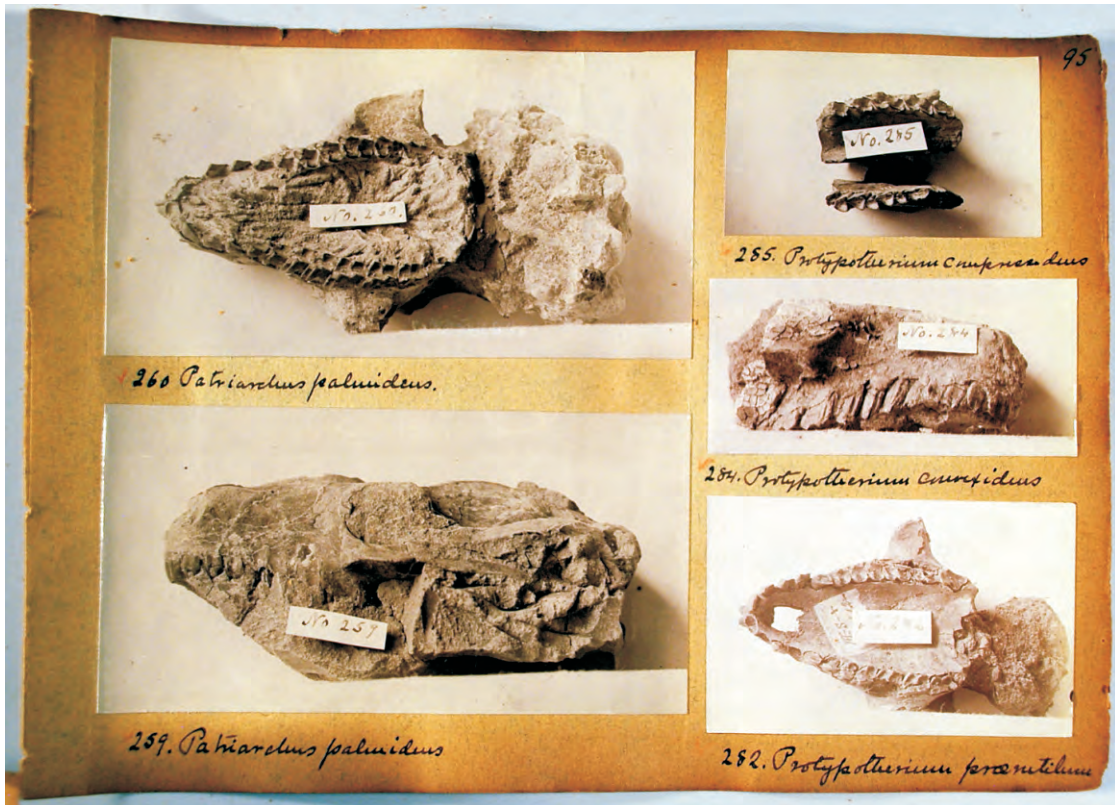
MISSING

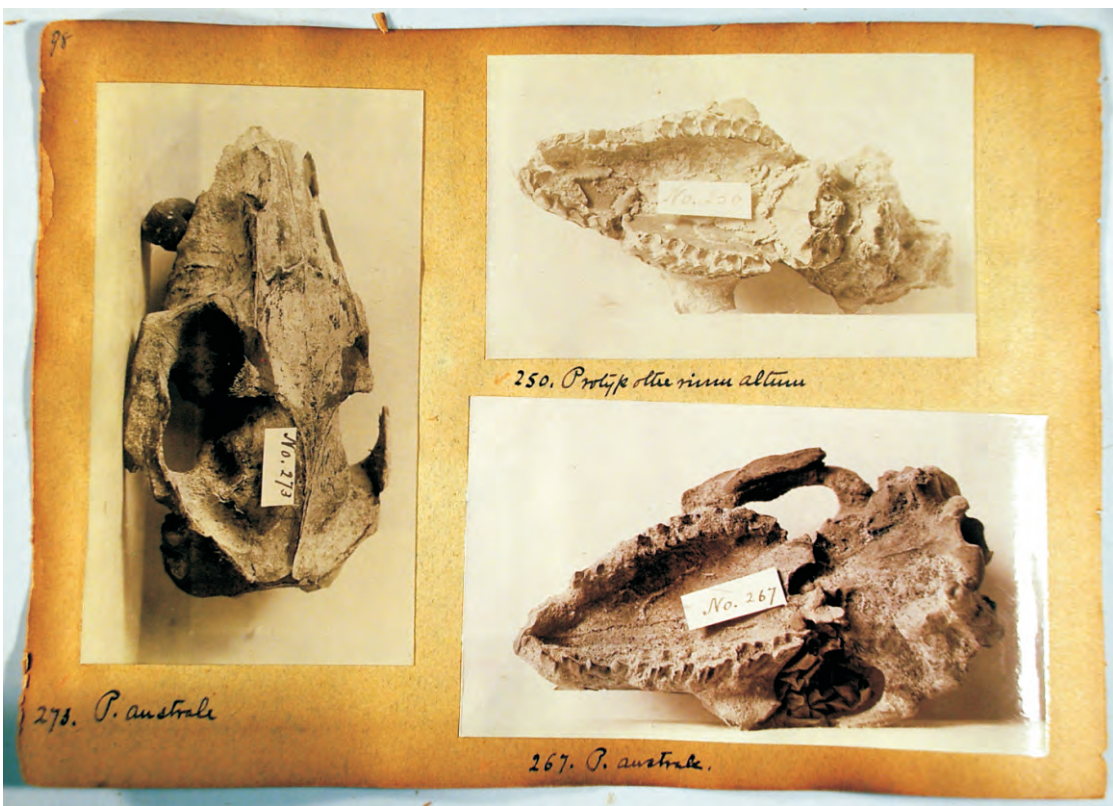
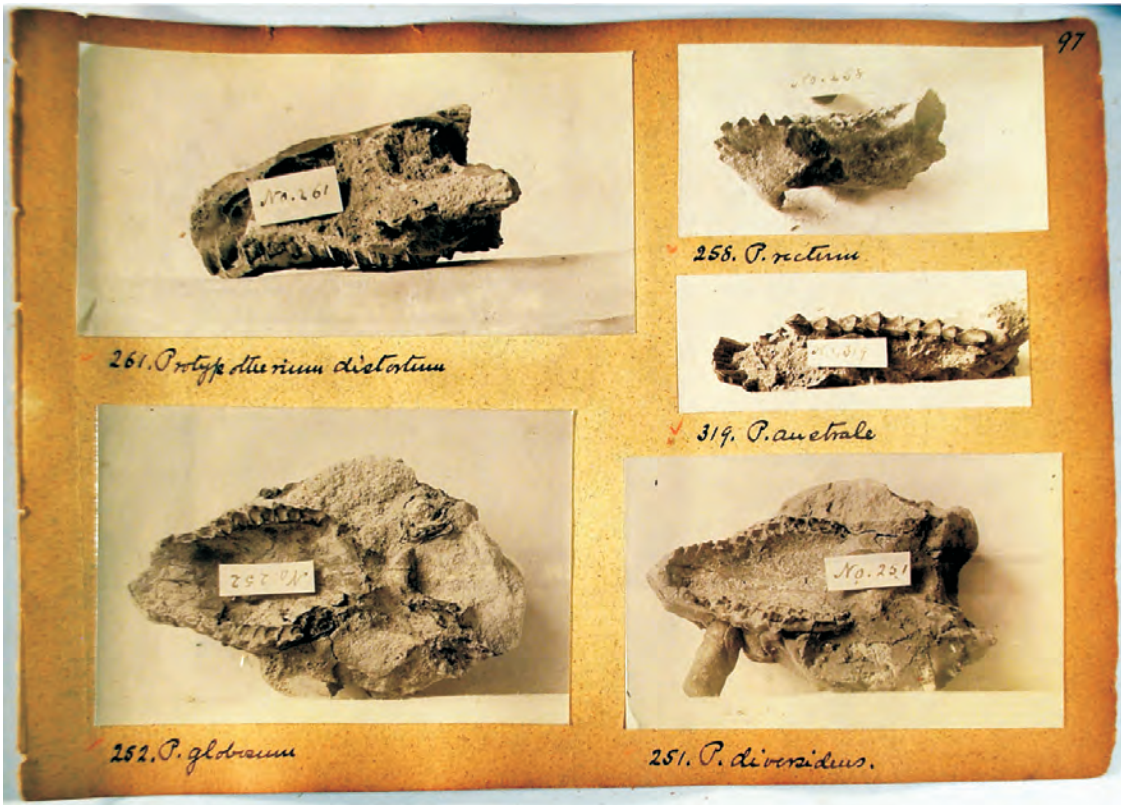




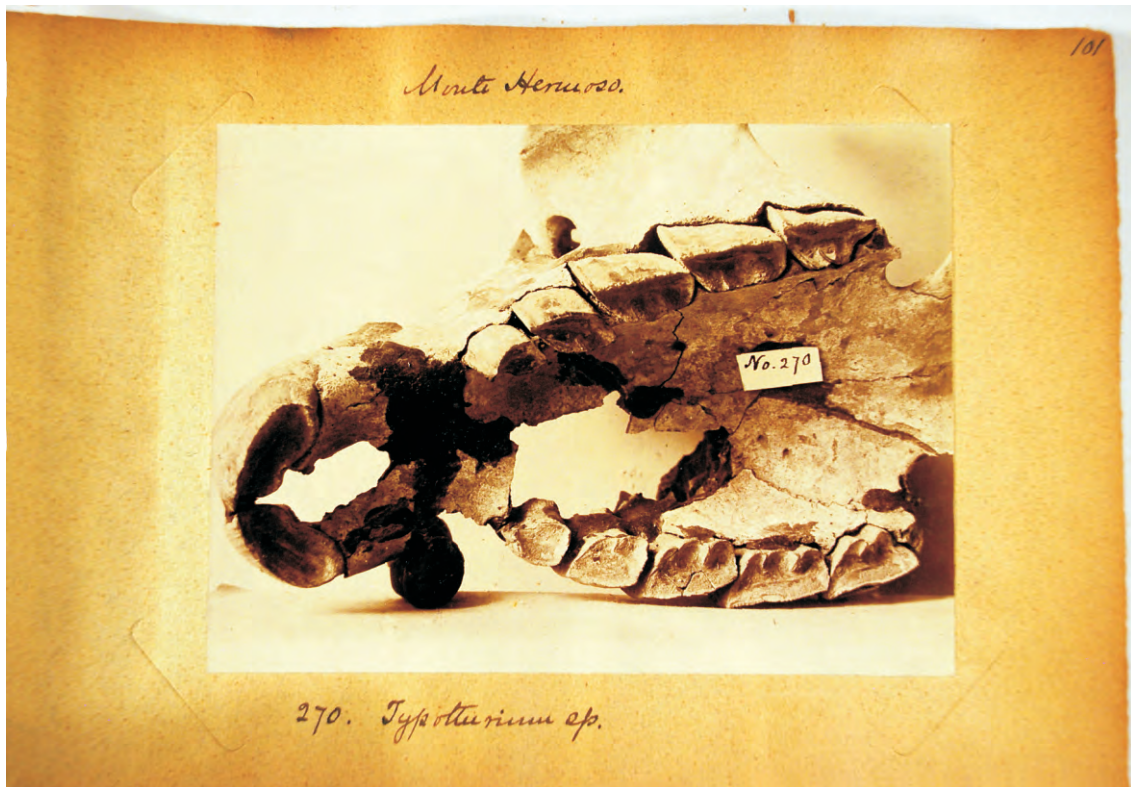


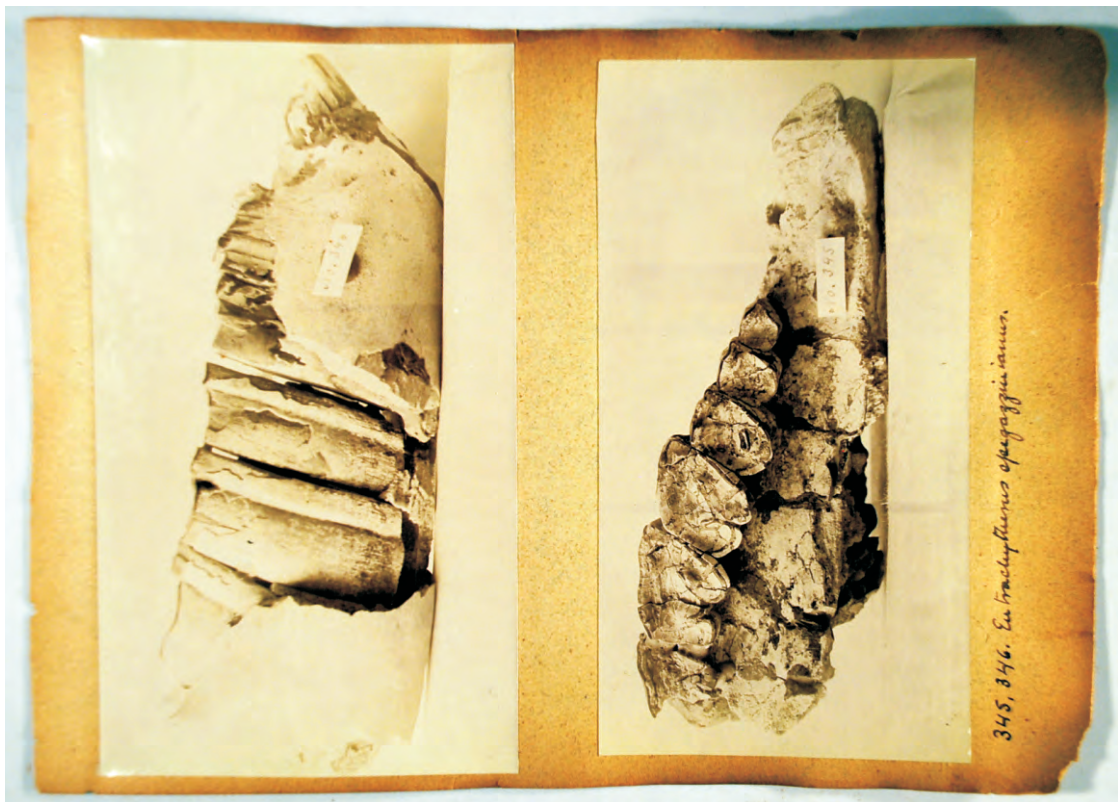
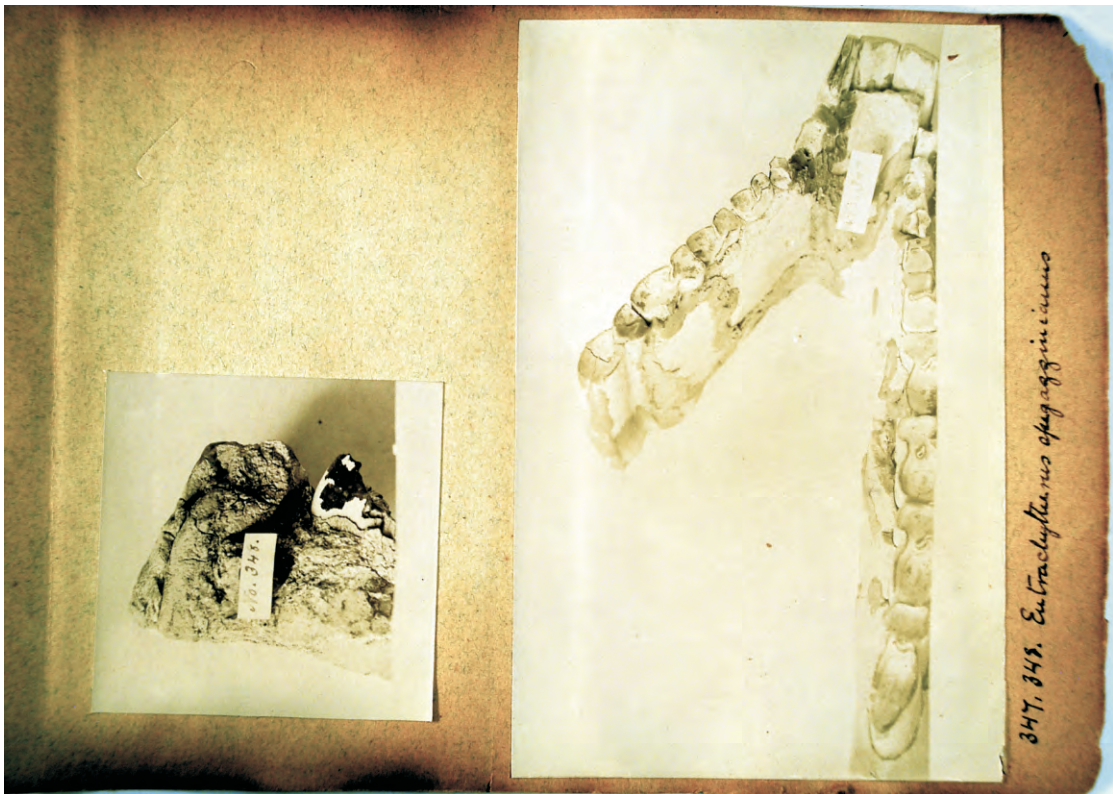


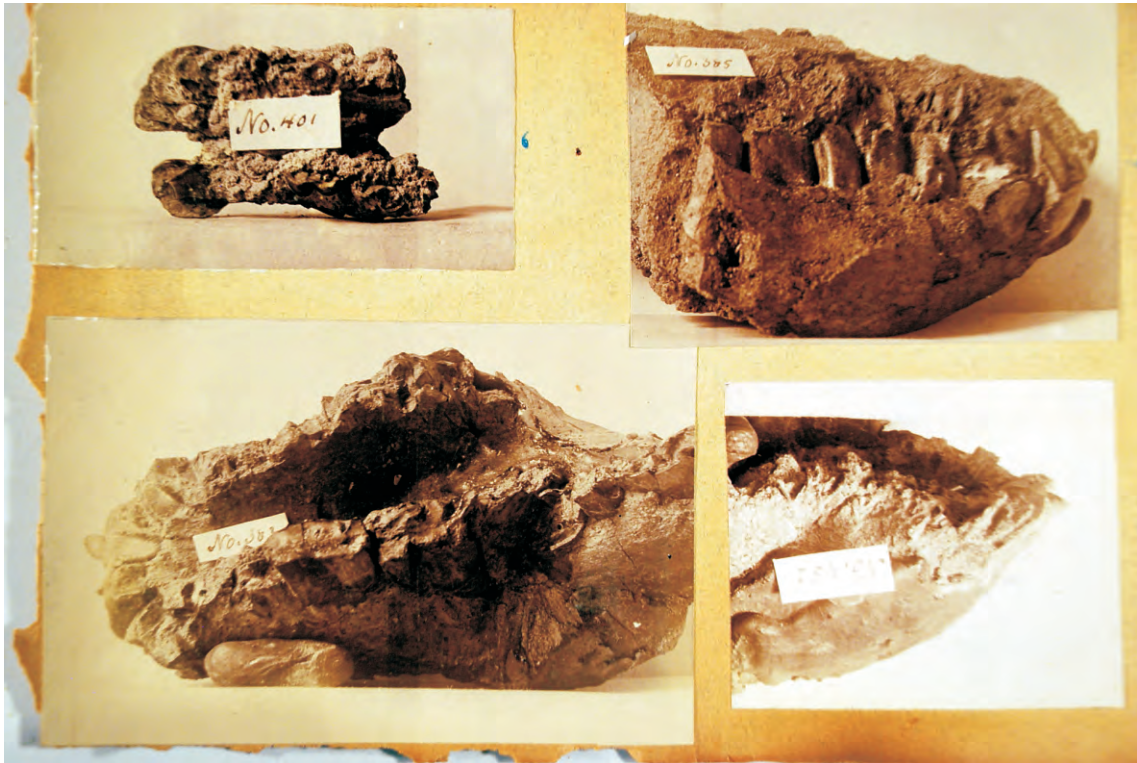


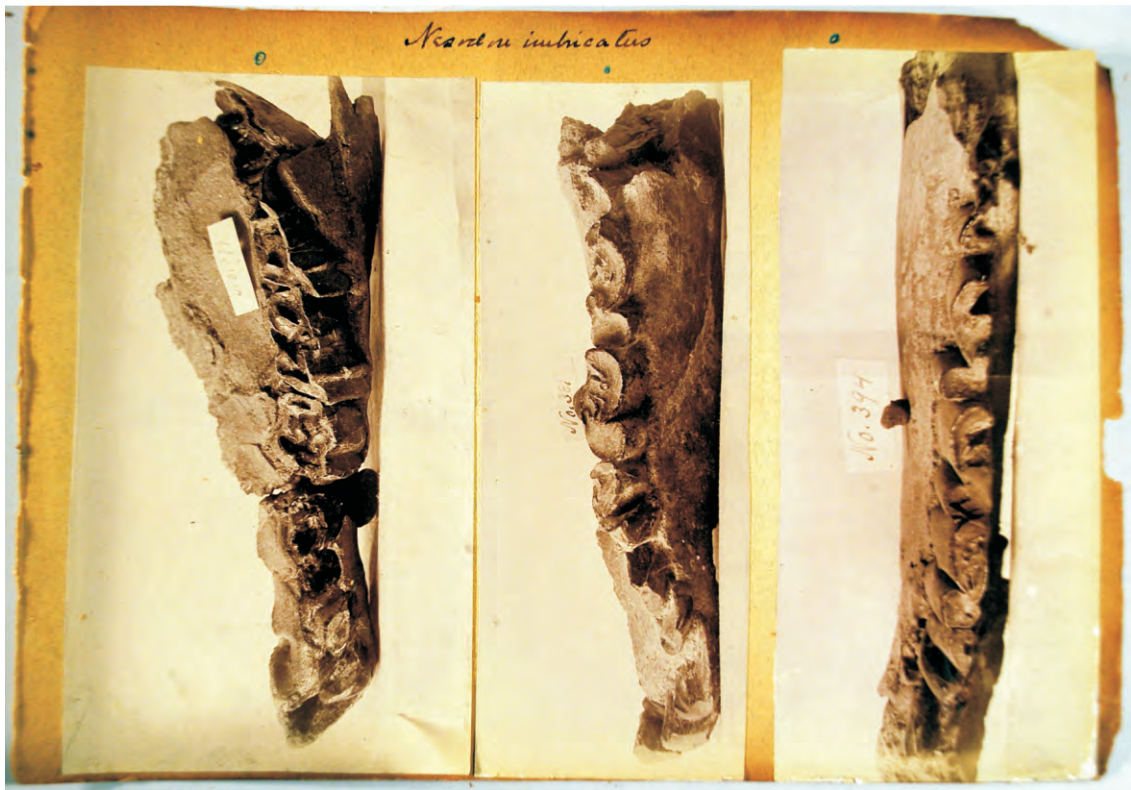
















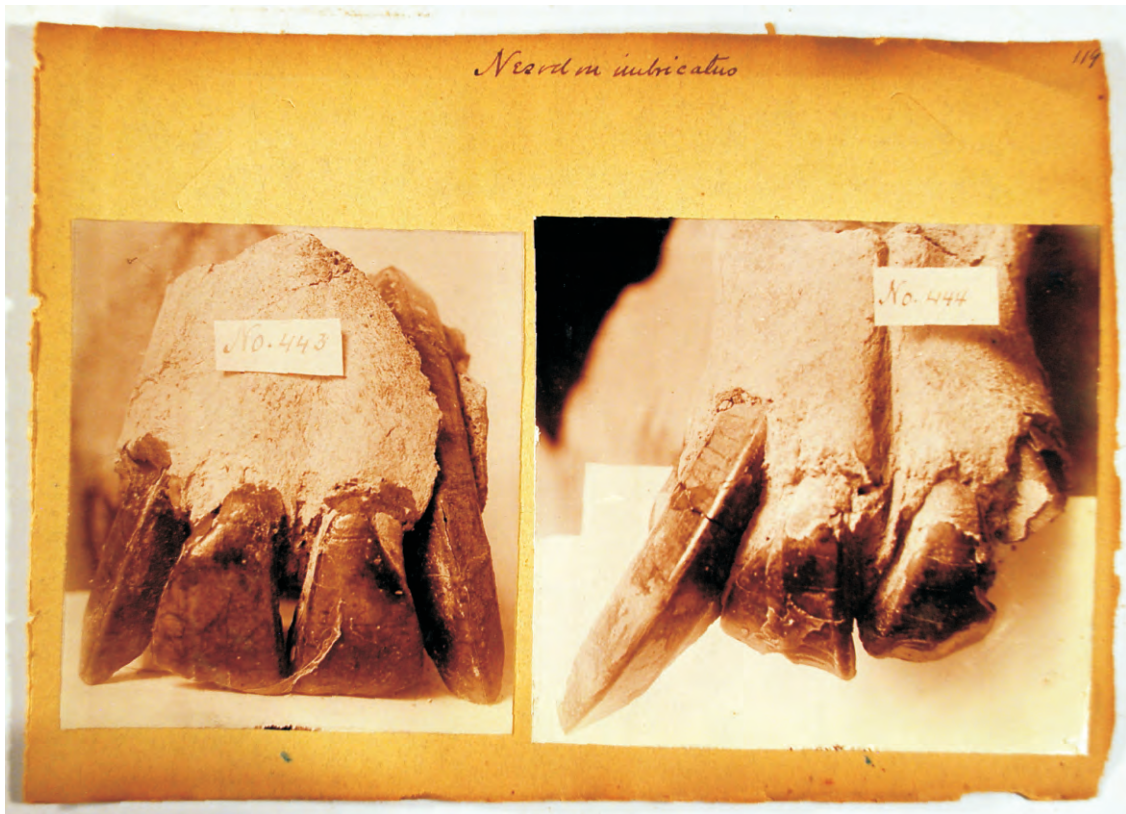
MISSING

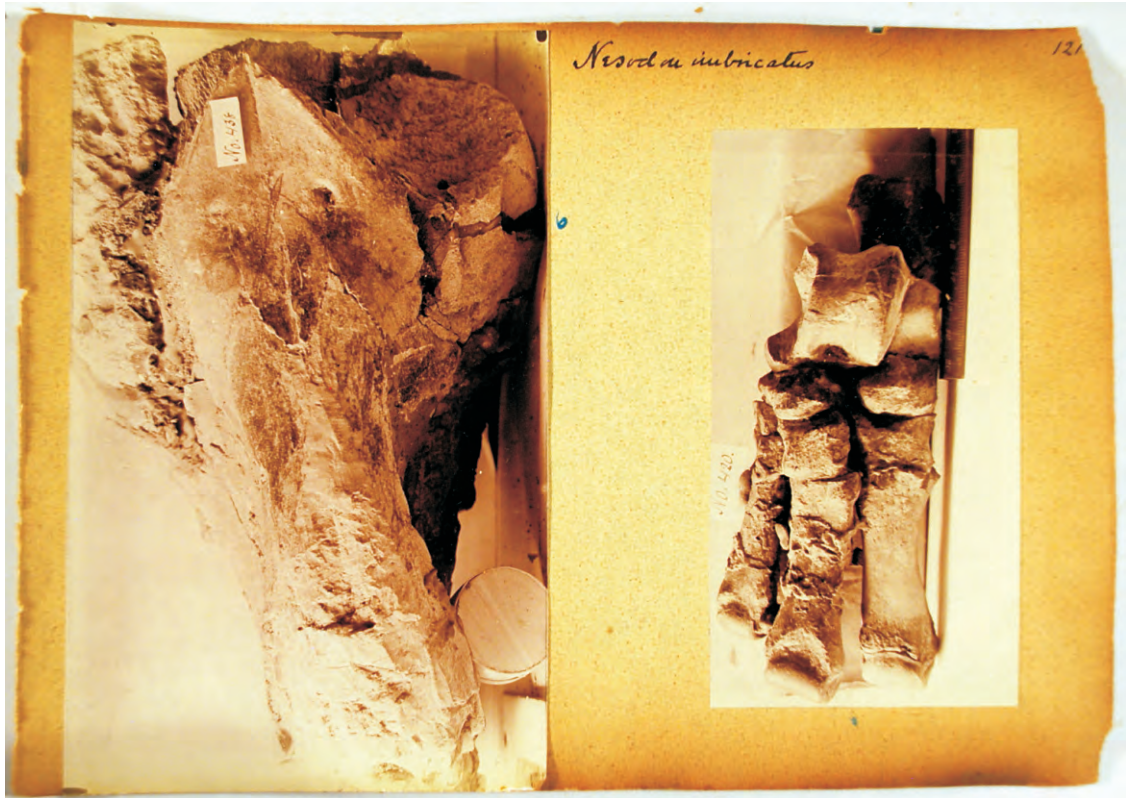


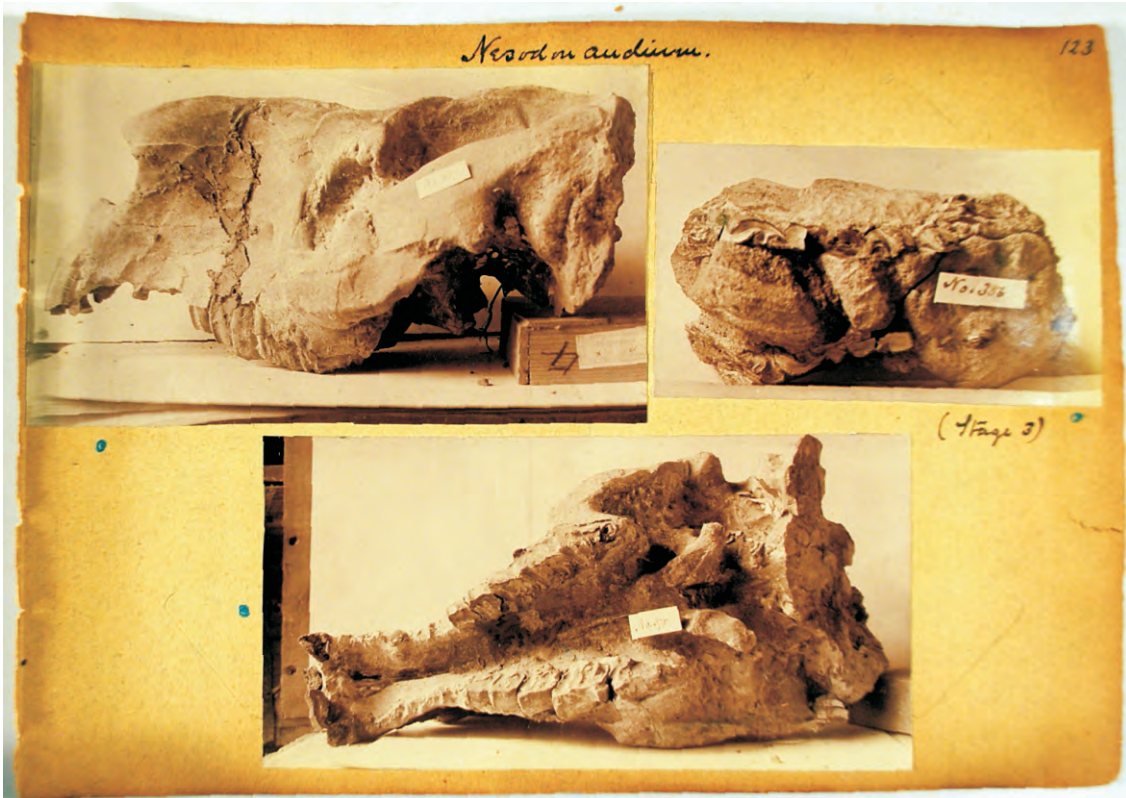






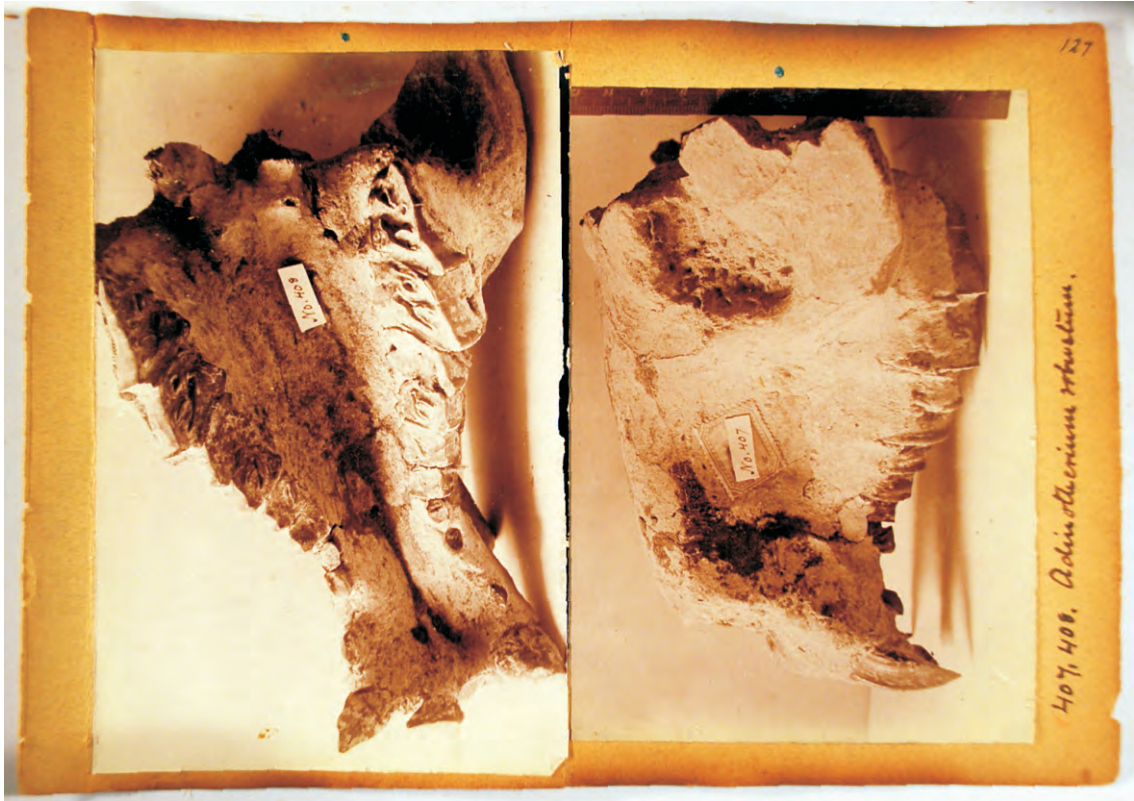




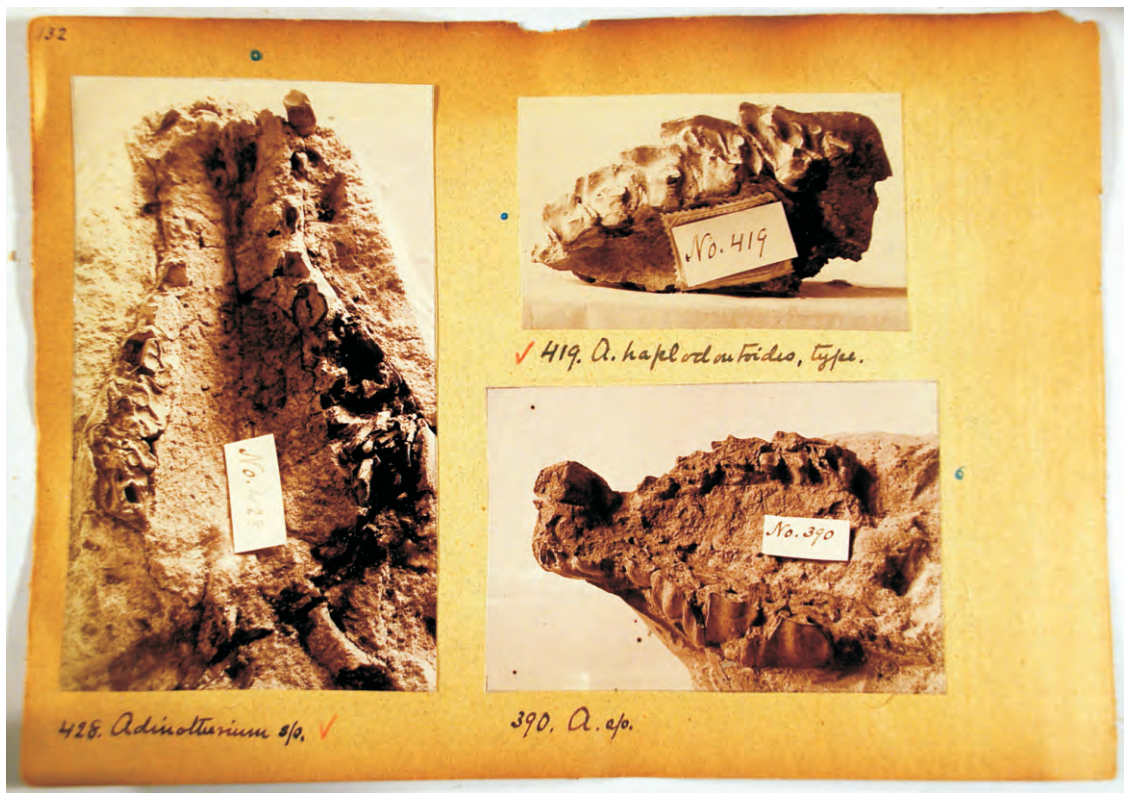
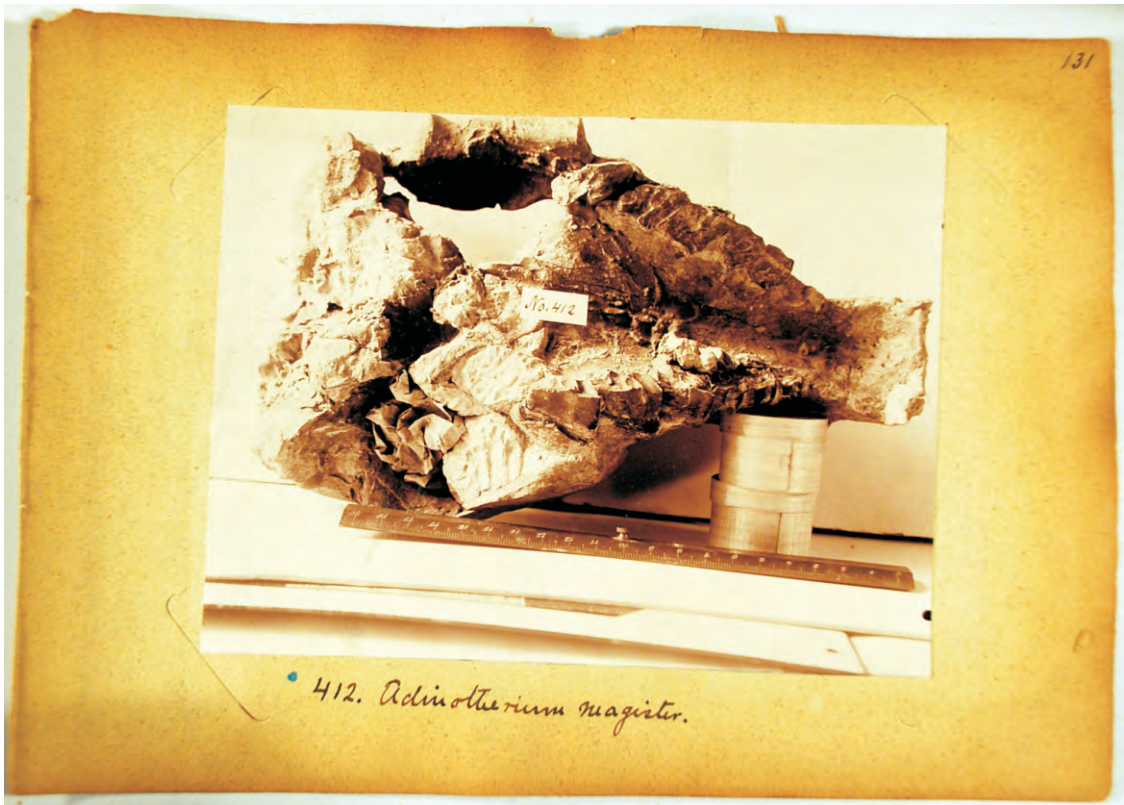


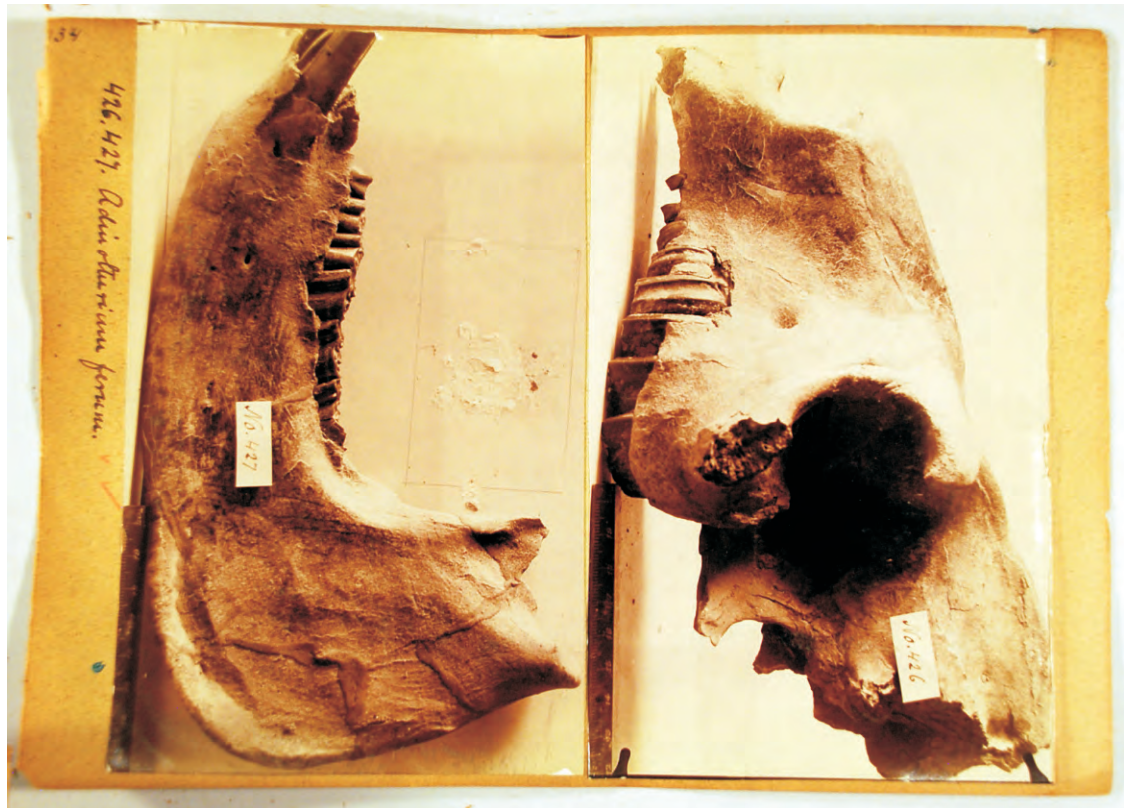








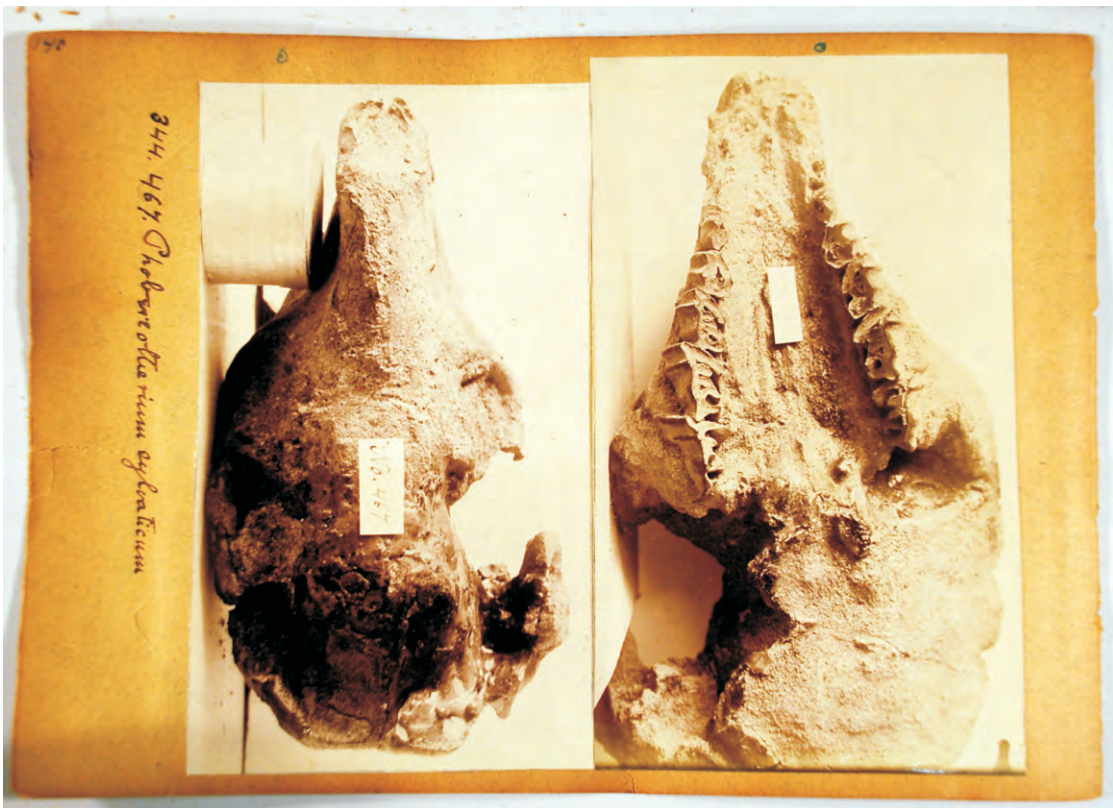




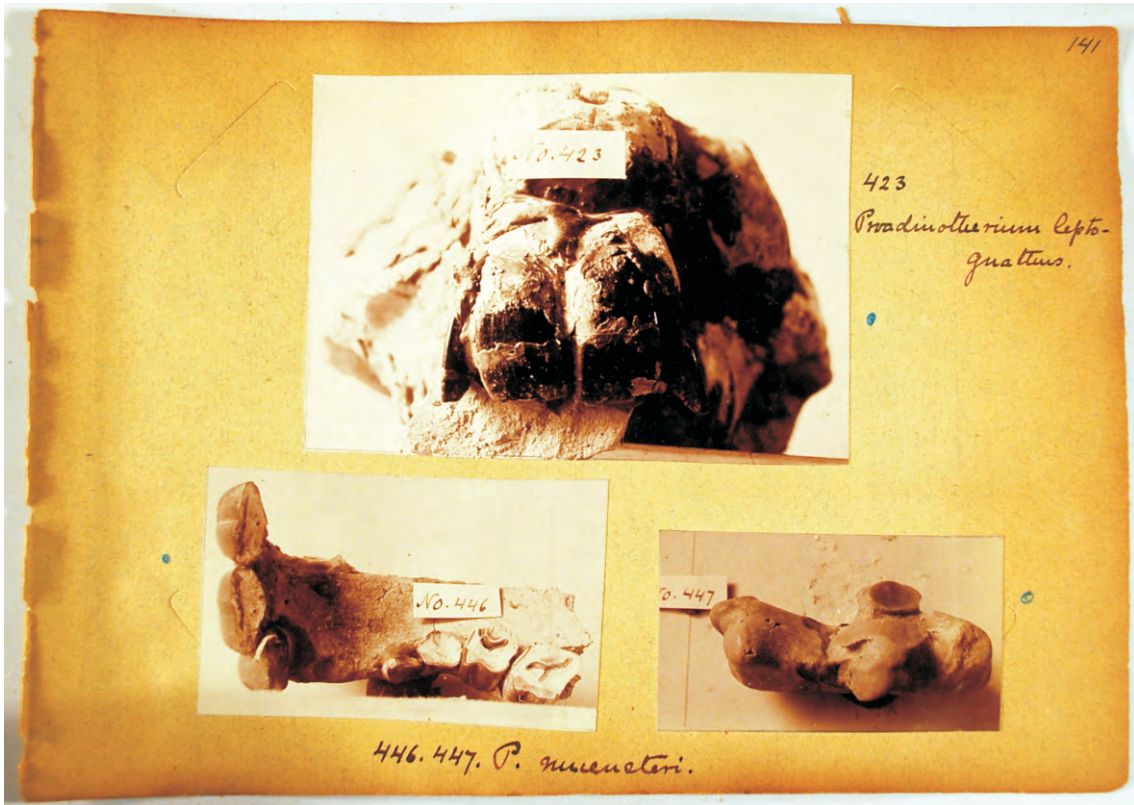


MISSING





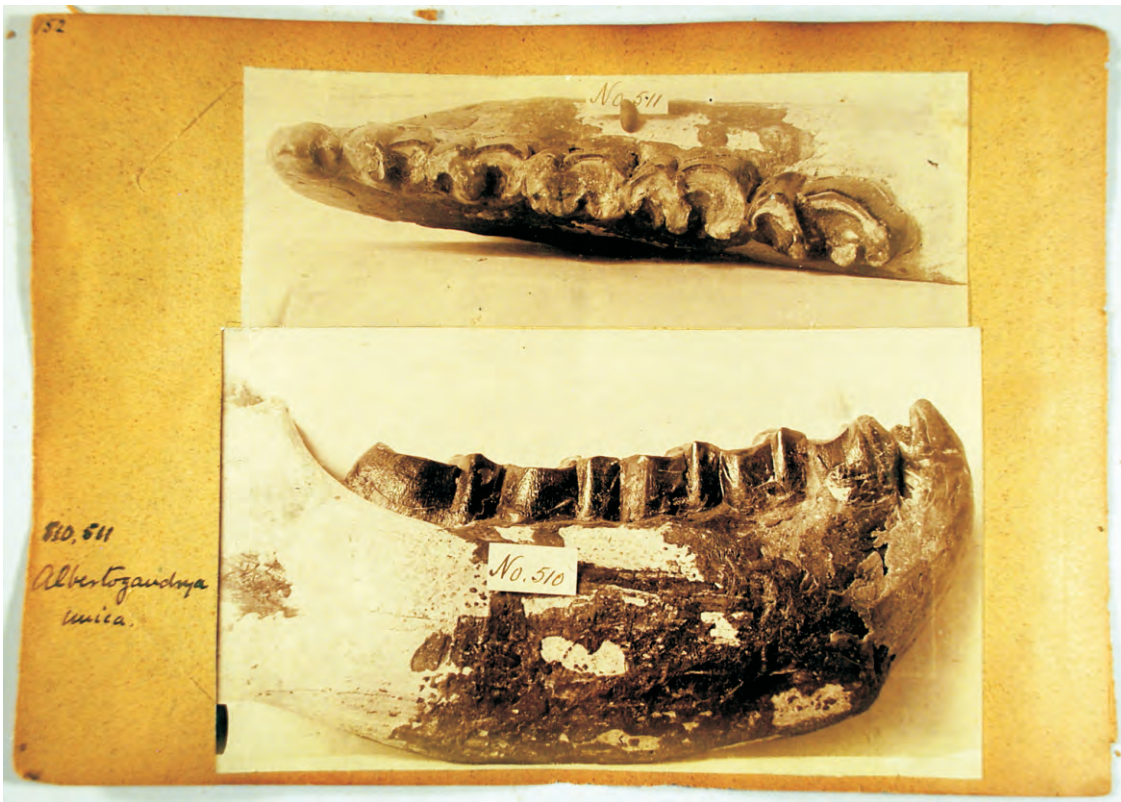


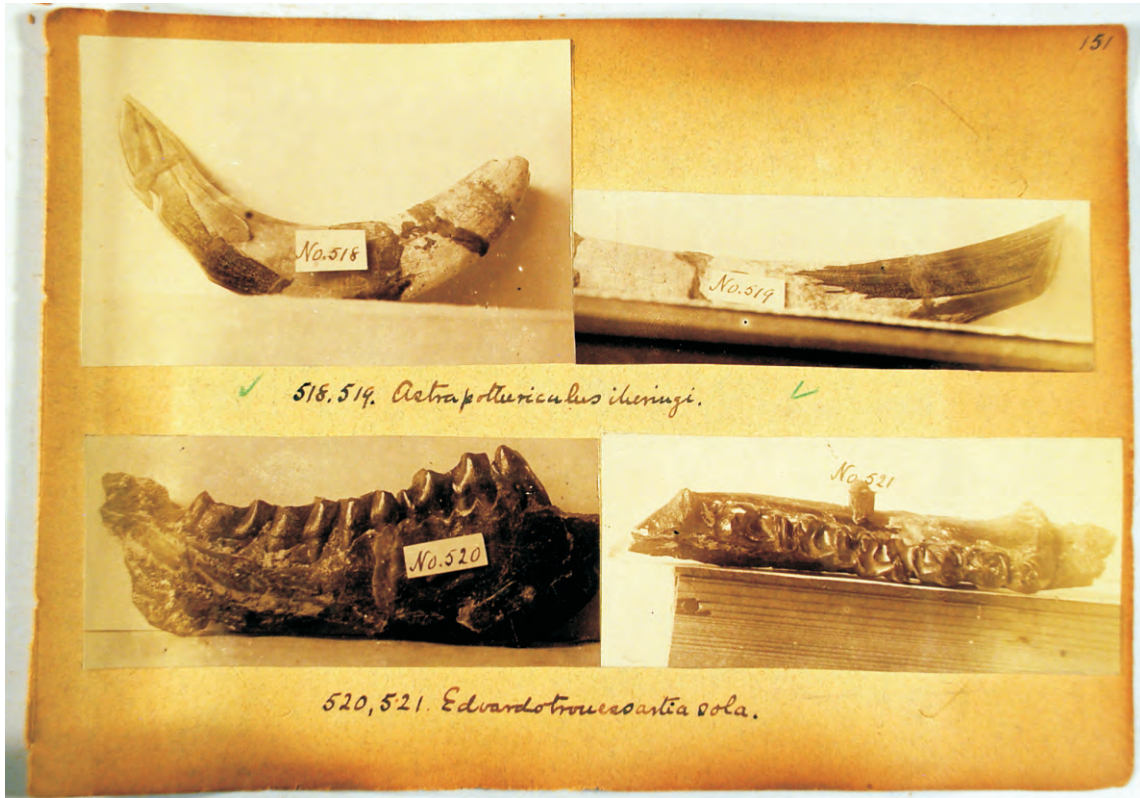












MISSING

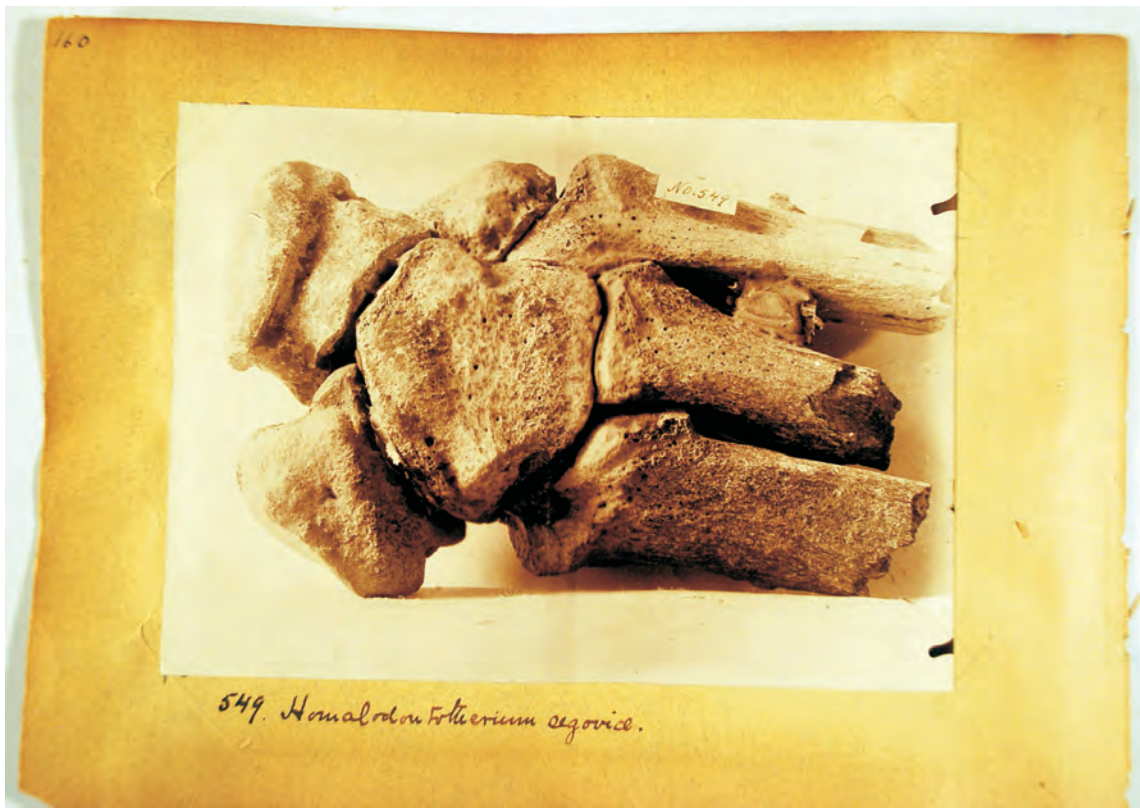
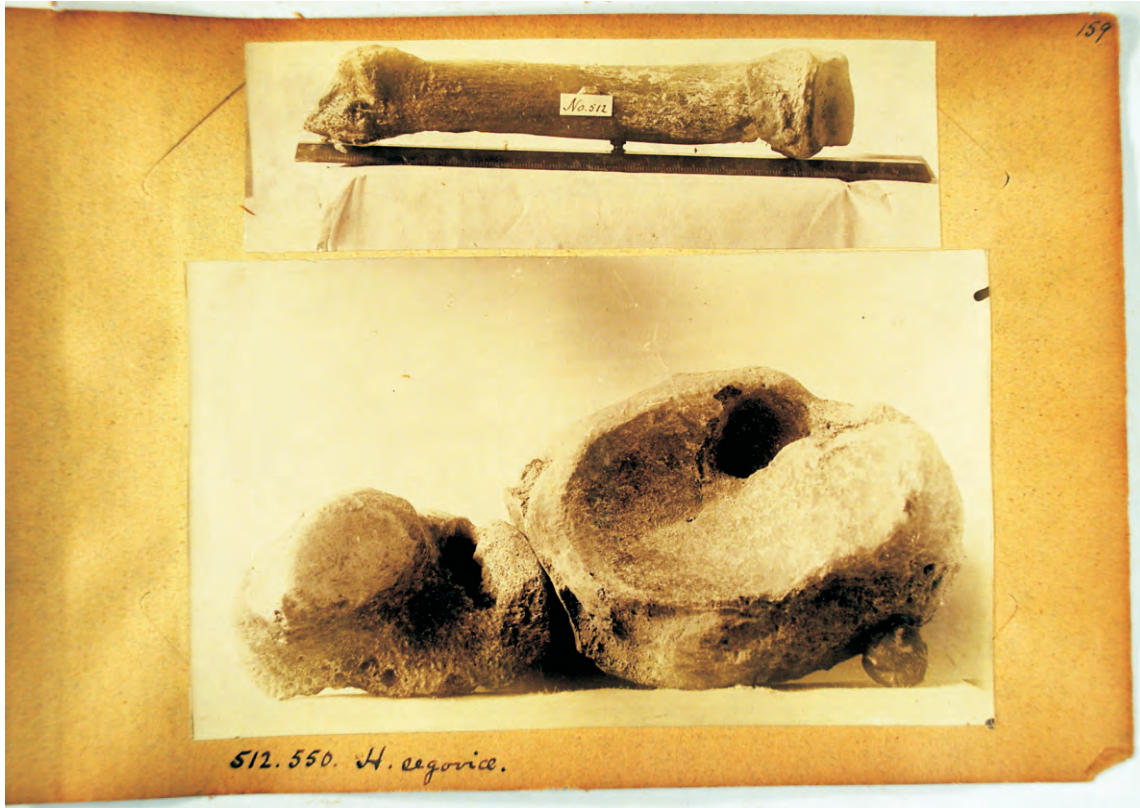
MISSING





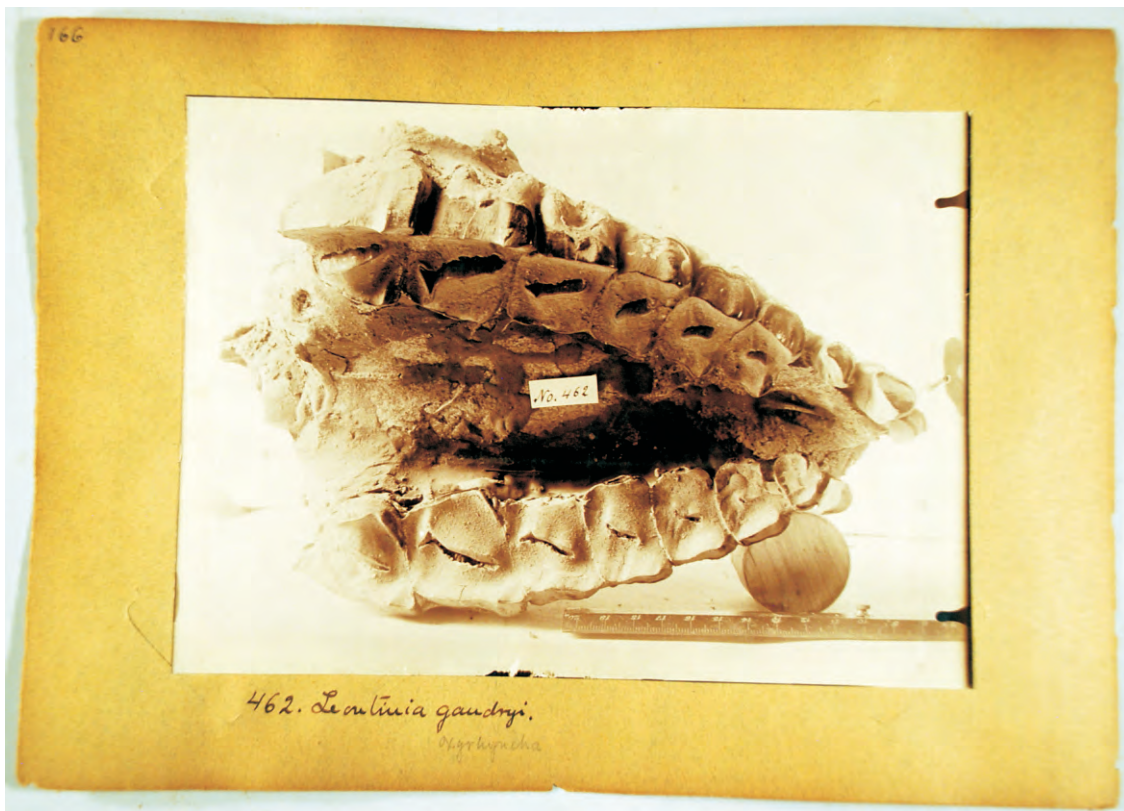


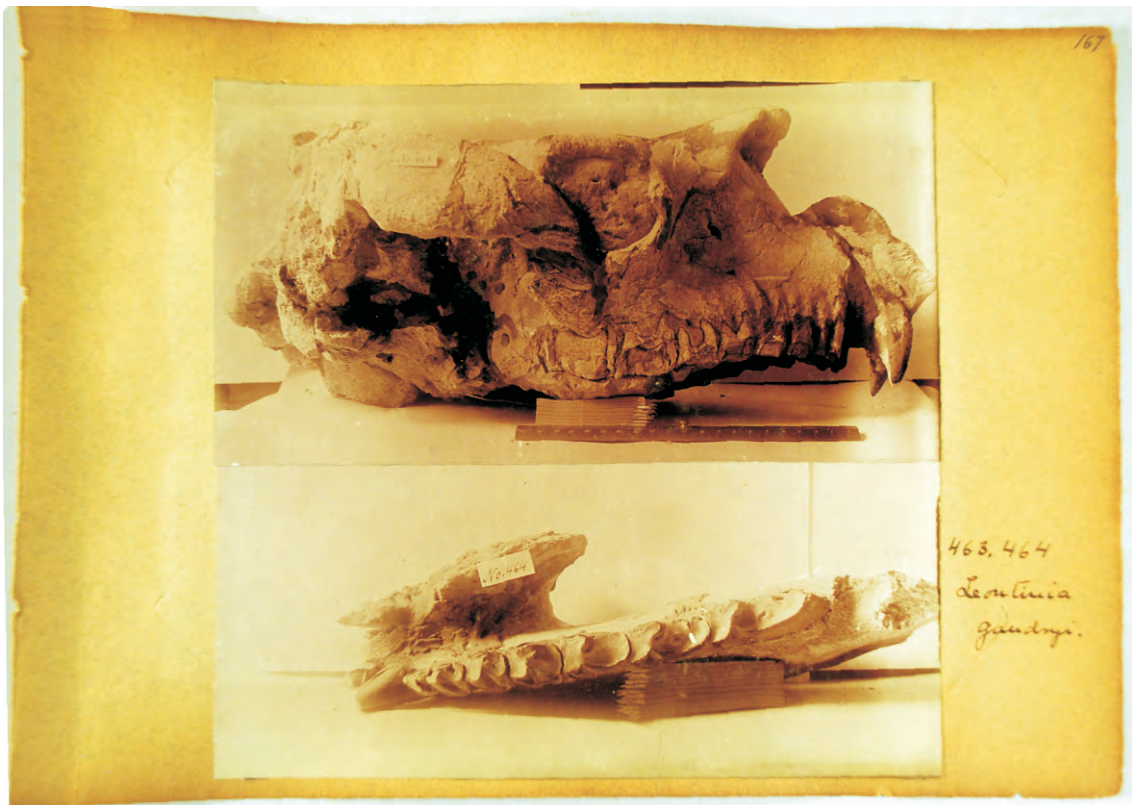


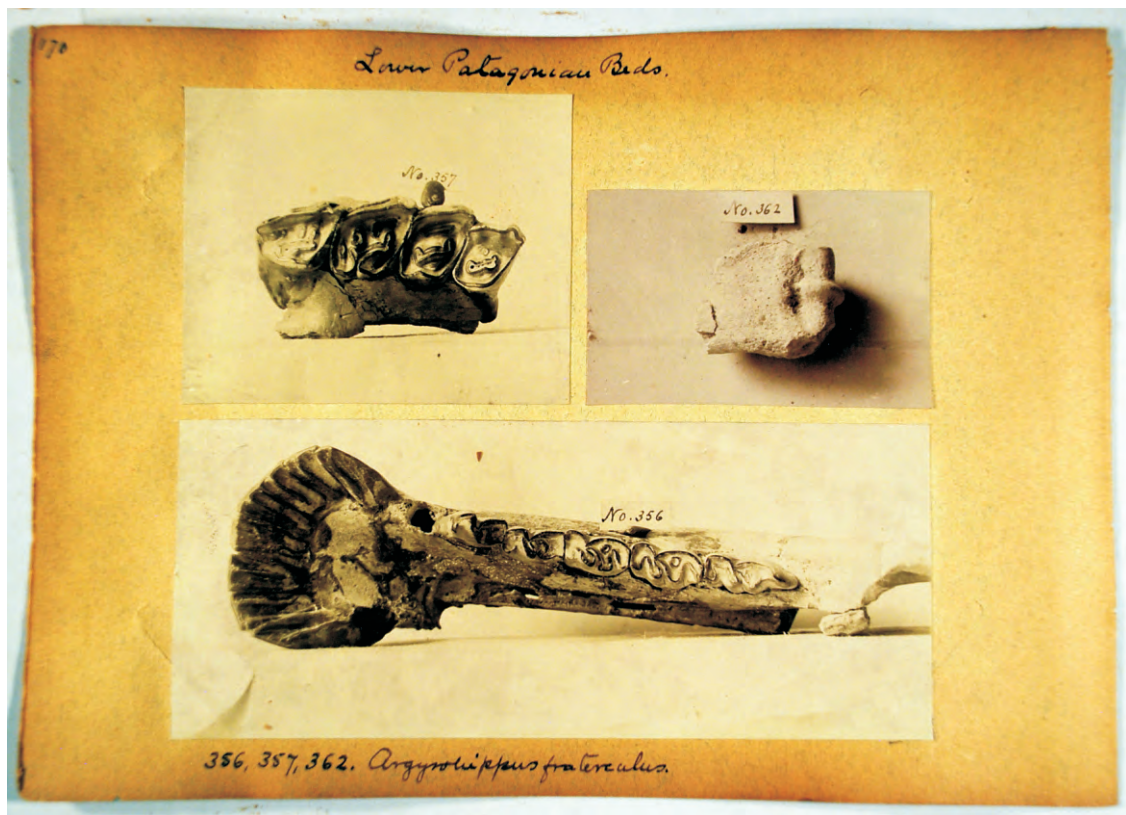
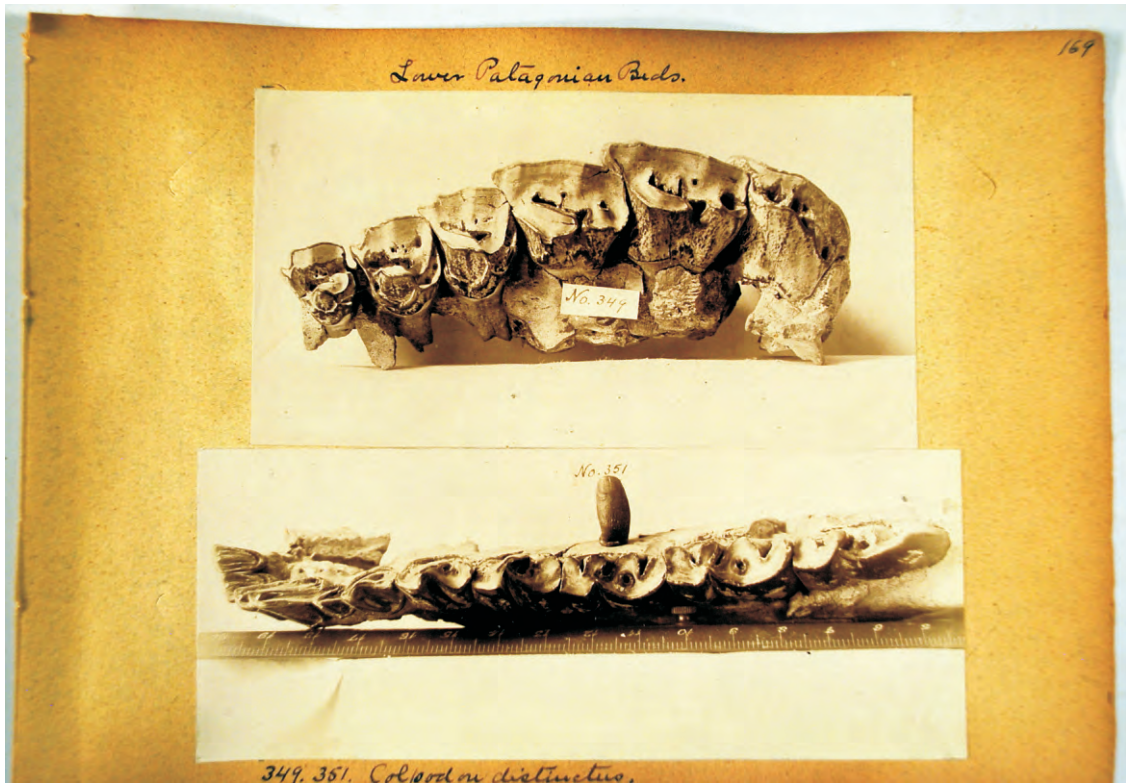






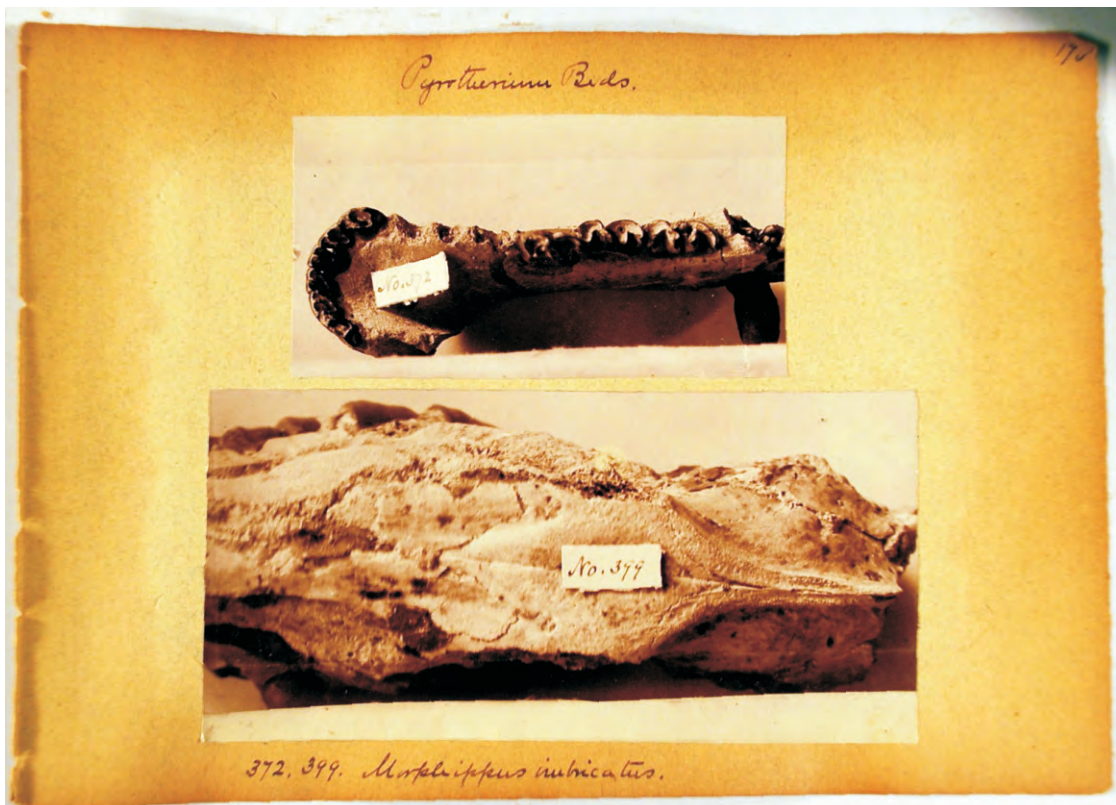






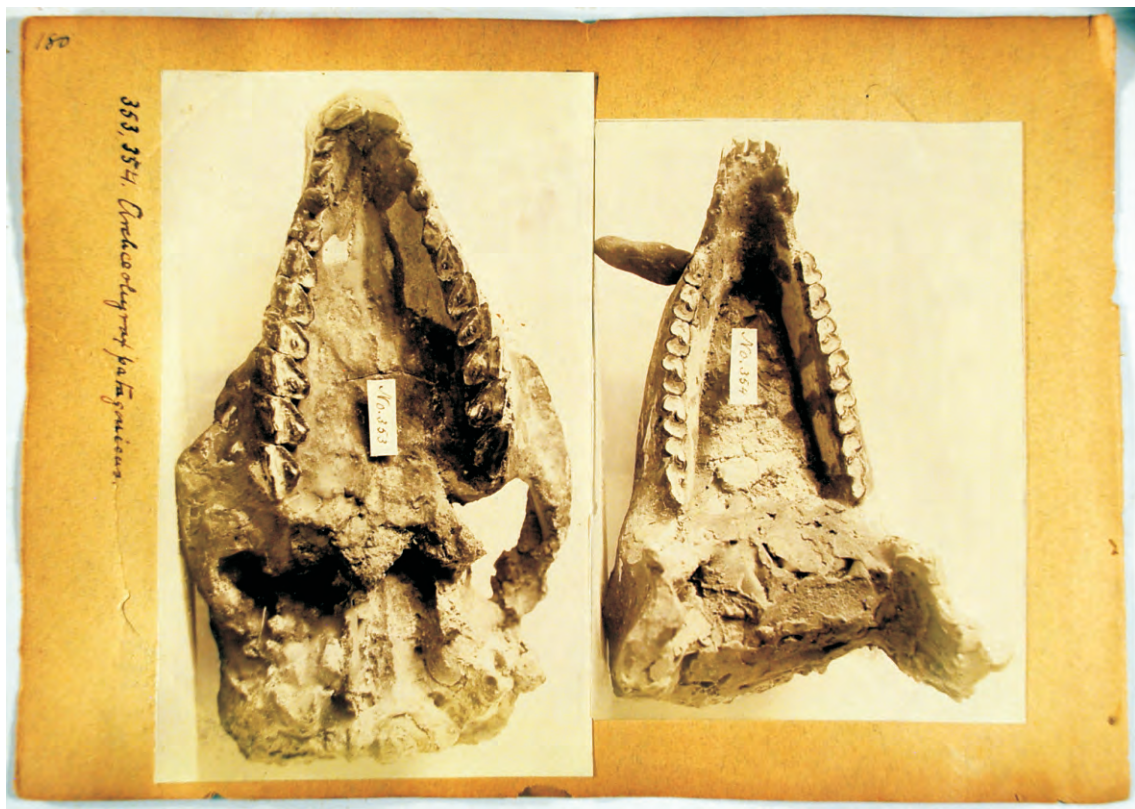
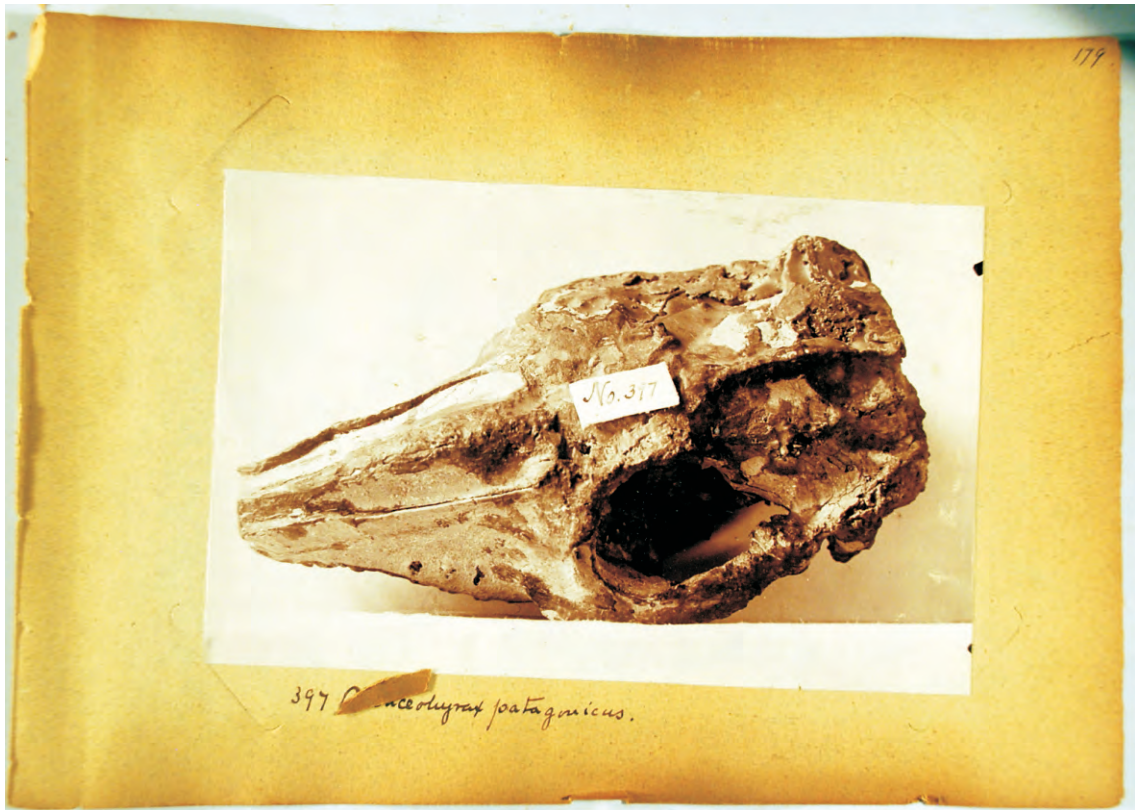


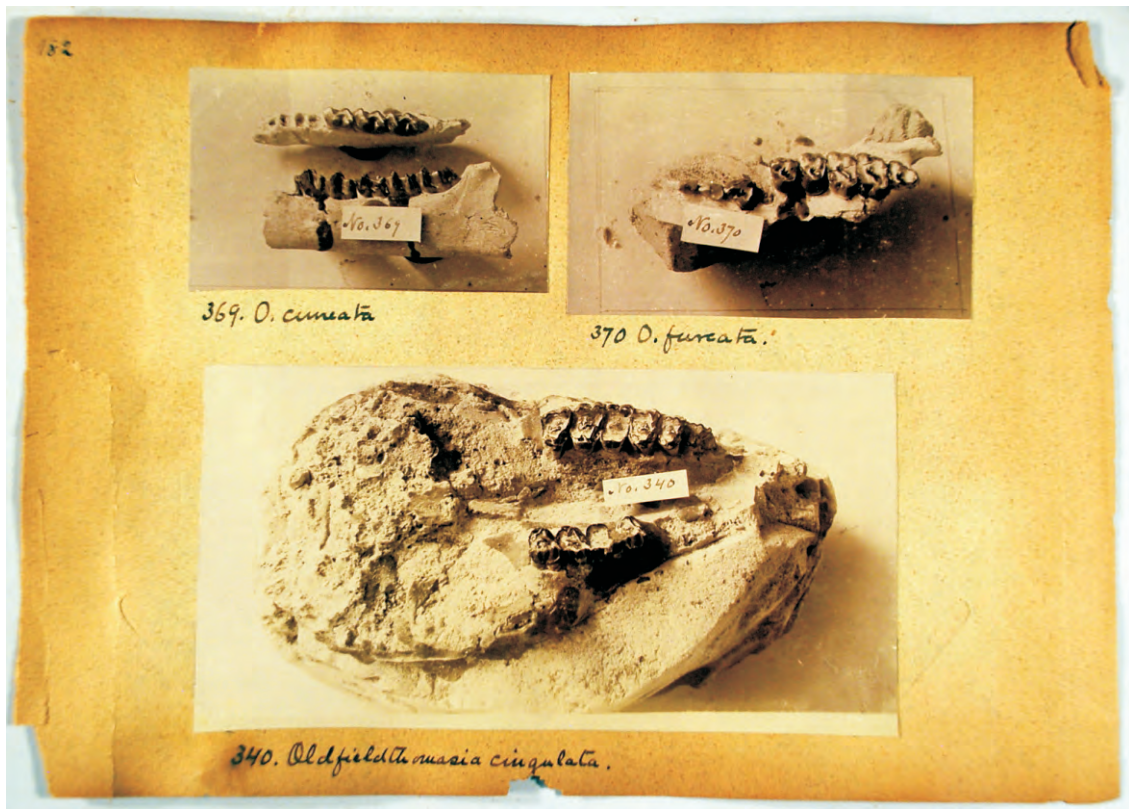




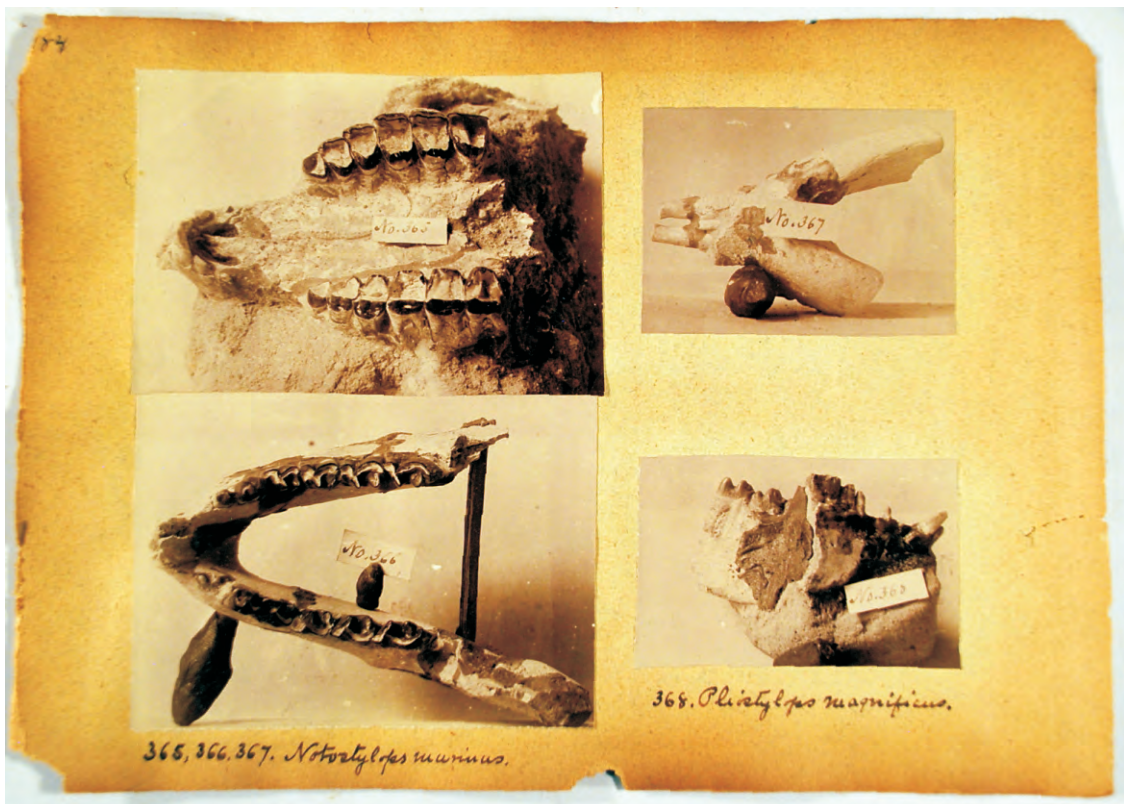








MISSING





337. *Acœlodius debilitatus.*

338, 339. *A. oppositus.*



527. *Isotenus primitivus*

526. *Protolops cygnus*

531. *Ricardolopla karia*  
*perempta.*

532. *Anisolumba*  
*fissidus*

533. *Victolemoinea*  
*caucasicata*

534. *Didolobus crassiuspis*

535. *D. multispinis.*

